

## Handi step Installation.

1820 -2020 mm Fixed step.

**Ford E-Transit 2023 - (Bracket kit part 4021)**

Version 1,2



**Handistep Fixed.**



### **TECHNICAL SPECIFICATIONS**

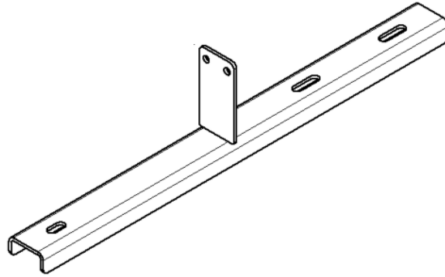
Max. load	kg	140
Height	mm	22
Width	mm	196
Available length.	mm	720
	mm	1220
	mm	1820
	mm	2020

Baggeskærvej 48 7400 Herning. DK [www.handimobil.dk](http://www.handimobil.dk)

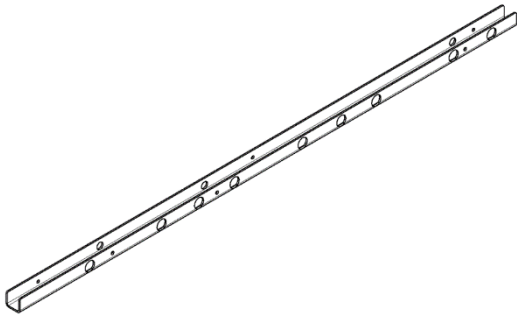
Tlf: (+45) 8818 1700 Mail: [info@handimobil.dk](mailto:info@handimobil.dk)

**Bracket kit included:**

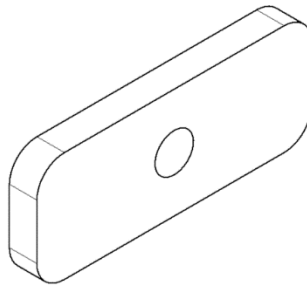
3 pc. Step bracket.



1 pc Rear bracket.



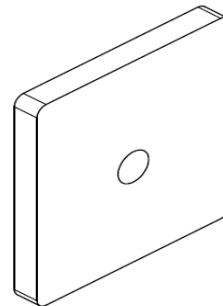
3 pc mounting bracket (Rear bracket)



Mounting screws.



6 pc Step mounting plate.



## Attention

No work may be carried out on the Ford E-Transit until the conditions for work on the Ford E-Transit have been read and understood.


We refer to the Ford BEMM




(Ford Body and Equipment Mounting Manual) page 272.

[https://www.fordpro-specialvehicles.com/en\\_gb/home/vehicle-page.html?nameplate=T](https://www.fordpro-specialvehicles.com/en_gb/home/vehicle-page.html?nameplate=T)

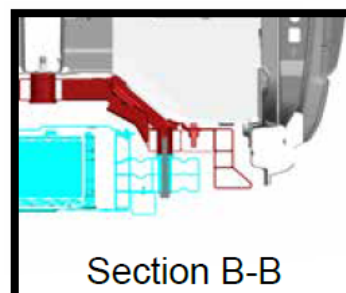
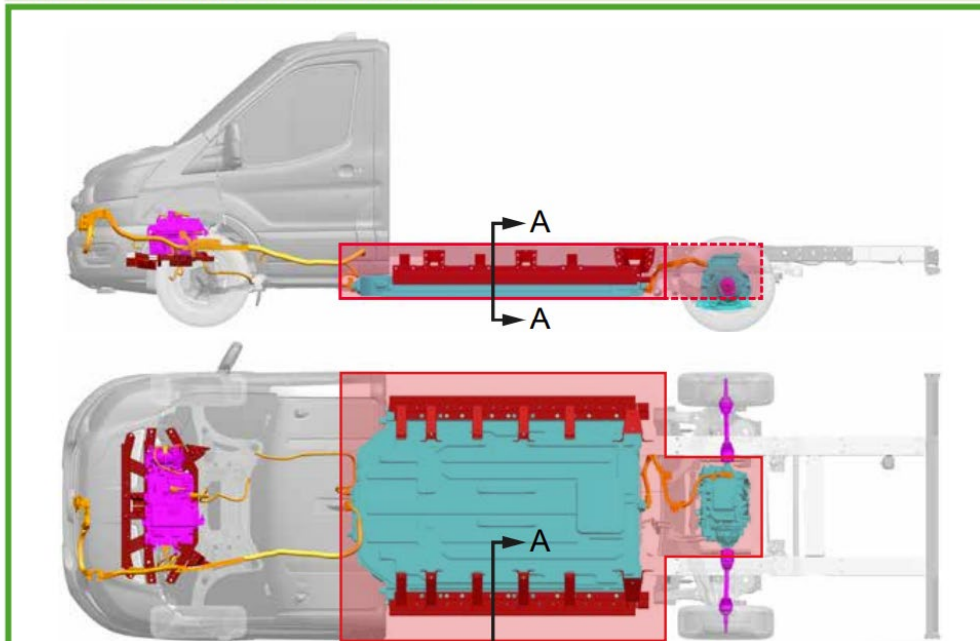
### 5.1.5 No Drill/No Weld Zones - BEV

#### WARNINGS:

 Do not undertake drilling\*, welding, or any other operation, in the red marked zone in order to prevent damage to the components placed underneath the floor, in particular battery and high voltage system components. Refer to separate guidance in [Section 5.1.6 BEV Van Floor Drilling](#) and [Section 5.1.7 BEV Side Step](#)

-  Do not drill the Side Impact Bars or Side Energy Absorption Members
-  Do not weld to the High Voltage Battery, casing or cradle
-  Do not ground welding equipment to the Battery, Battery Casing, or Battery Cradle

### Floor No Drill/No Weld Zones - Chassis Cab



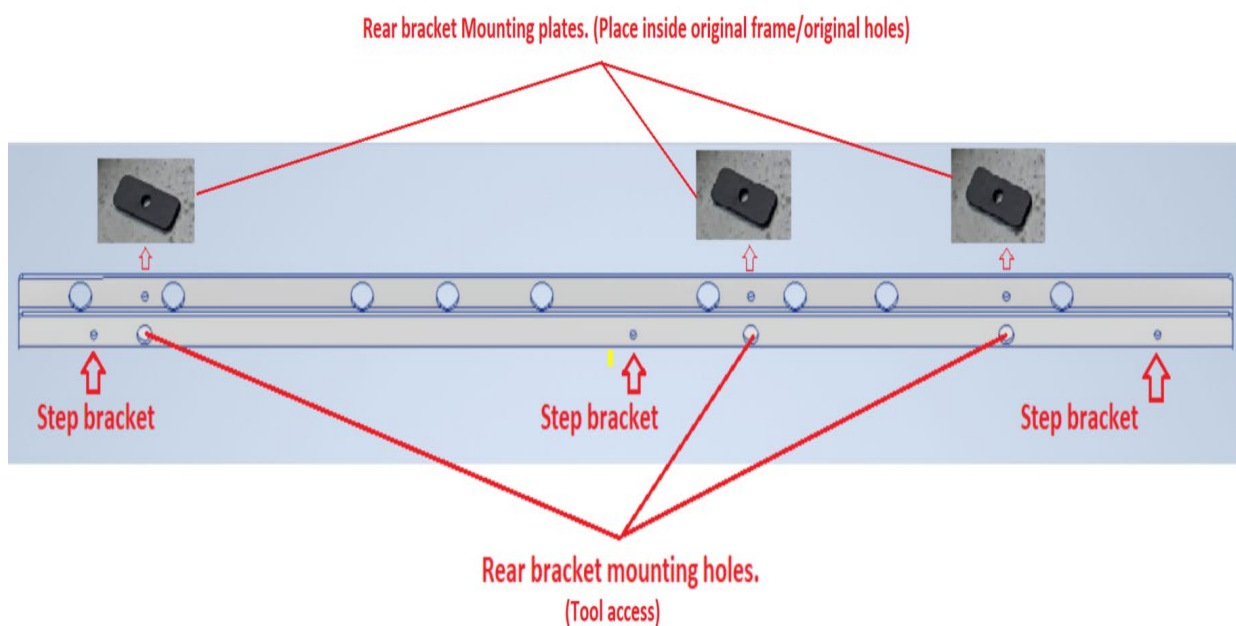
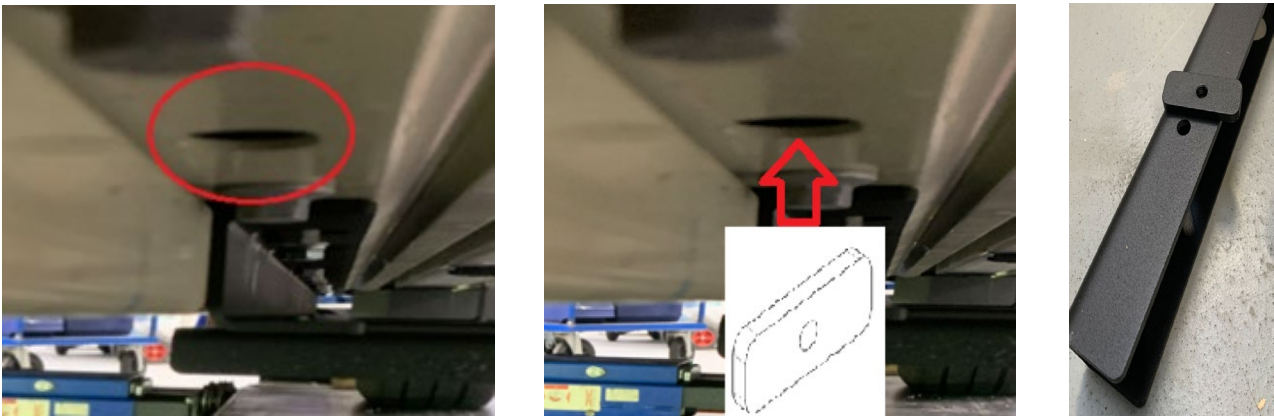
## Step 1.

Place the rear bracket "C profile" as shown in the picture. Based on the large holes in the bracket, it can only turn one way.

Holes are placed around the original Battery bolts.

(Original battery bolts must not be loosened)

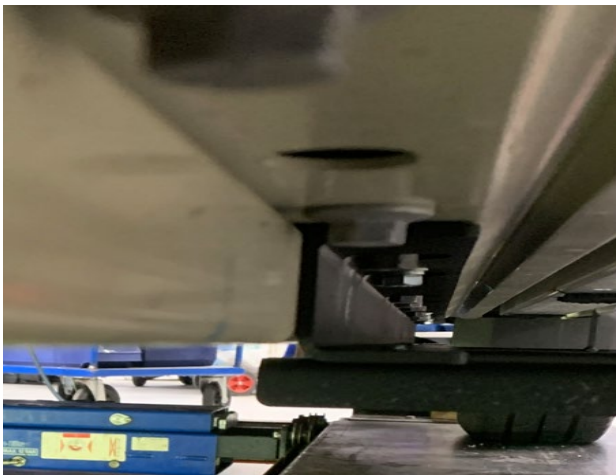
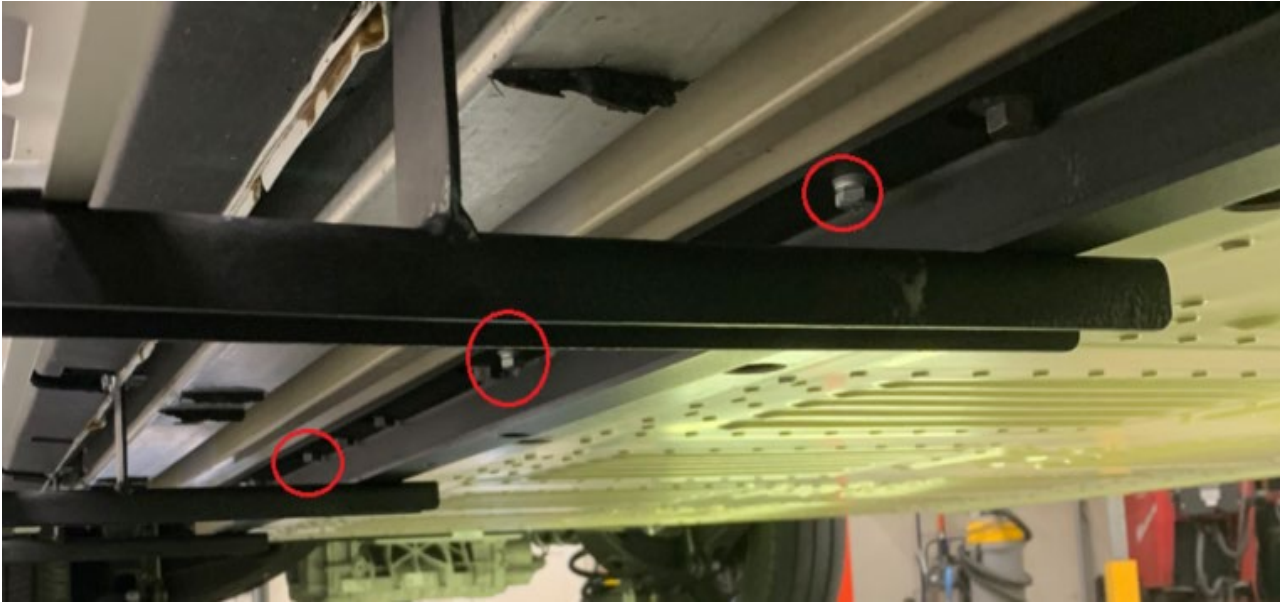
From the bracket position, it will be possible to see the original big holes in floor profile. Our mounting bracket is placed inside holes so that it is possible to attach the rear bracket. (Use a magnet as a helper)





C profile "Rear bracket" is attached with the supplied (M8 X 20mm) screws.

(Marked in red)



## Step 2.

Use step bracket as a template and drill holes in vehicle's side panel.

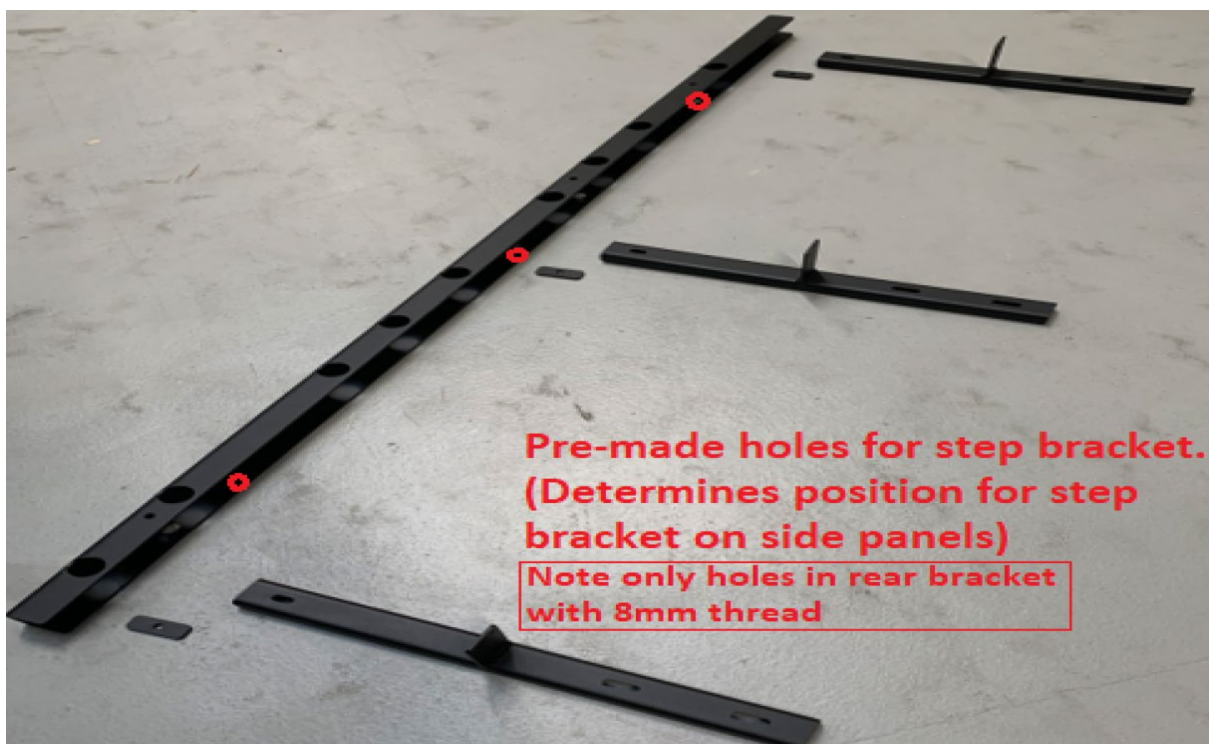
It is necessary to adapt the plastic cover.

**(Side panel is outside safety zones "battery")**

Bracket is mounted with the supplied 6mm screws and nuts.

The pre-made M8 holes in the **Rear bracket** can be used as

Template/suggestions (Recommended)

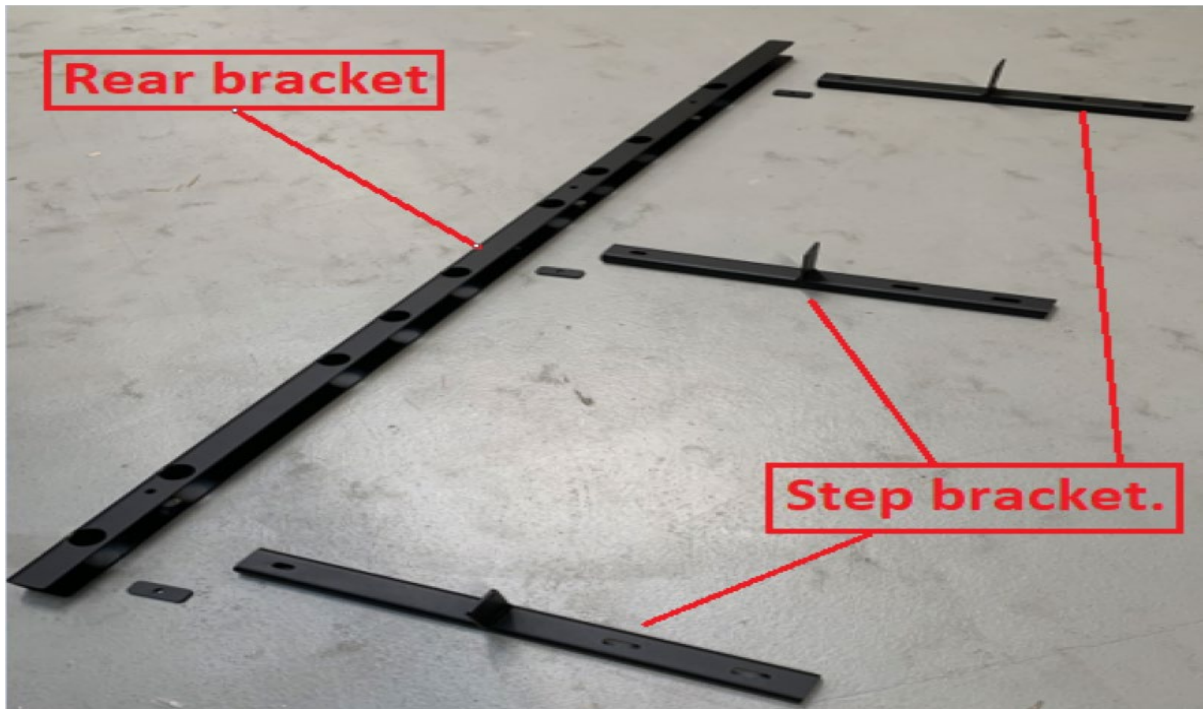


Pre-made holes/step bracket.



Side panel drill.





Step Bracket is mounted with the supplied 6mm screws and nuts.

(M6 X 16mm)

All drilled holes must be protected from corrosion. Use Sika-6250 or similar.

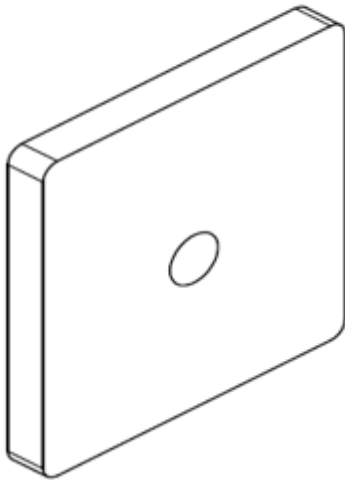




### Step 3.

Attach the step to the bracket with the supplied “**step mounting plate**” and screws. (M8 X 20mm)

6 pc Step mounting plate.



**Pay attention. bracket has 2 dimensions.  
Use the wide side for the Handi step**



**After installation, all parts are treated with rust protection.**

### Attention.

This assembly manual has been produced by Handimobil DK.  
This assembly manual, Handistep Installation Ford E-Transit version 1.2, complies with the applicable requirements according to the Ford Transit Body & Equipment Mounting Manual (BEMM) 2022.5 published July 2023.  
Handistep must be installed according to this manual.  
Handimobil DK or Ford Motor Company cannot be held responsible for incorrect installation.



Baggeskærvej 48 7400 Herning. DK [www.handimobil.dk](http://www.handimobil.dk)  
Tlf: (+45) 8818 1700 Mail: [info@handimobil.dk](mailto:info@handimobil.dk) .