

# Assembly instructions.

## MB Sprinter 316. 2020 -

### Wheelchair shoulder belt rail above the window.



#### Step 1.

The roof fabric/covering is removed up to the driver's seat.

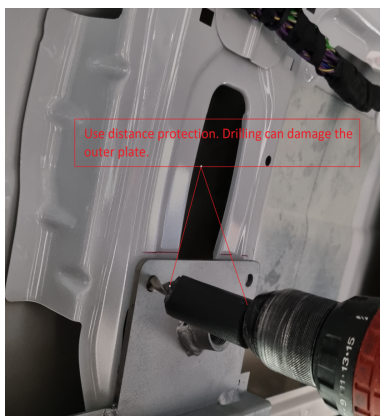
#### Step 2.

Left bracket/rail Part.7119-20-001 is applied with Lim Bostik ISR 70-05AP, or equivalent. Application area can be seen in the picture.

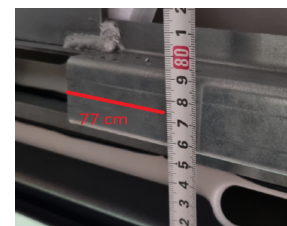


#### Step 3.

Bracket/rail Part.7119-20-001 is mounted as shown in pictures. 6pcs Ø8 holes are drilled in the vertical reinforcements, and the rail is fixed with 6pcs M8 bolts. Self-tapping screws (supplied) are mounted in the 14pcs Ø5 mm holes.



Measure point - height to rail. Position from side window



Step 4.

The right bracket/rail Part.7122-20-002 is mounted in the same way as on the left side. Height from window strip 77 cm to middle rail.



Step 5.

Roof fabric/covering is installed.



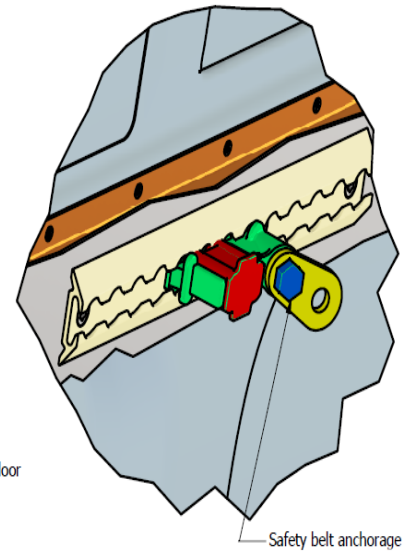
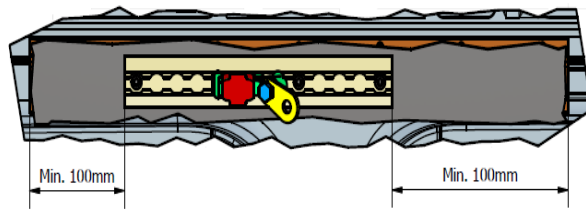
Step 6.

Rail is mounted outside roof fabric/covering . Use the included self-tapping screws.

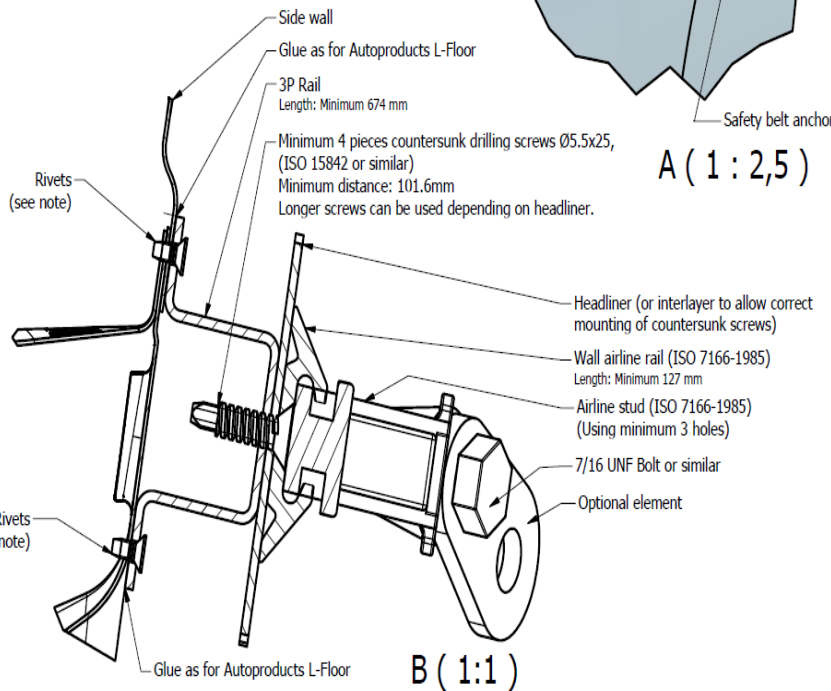
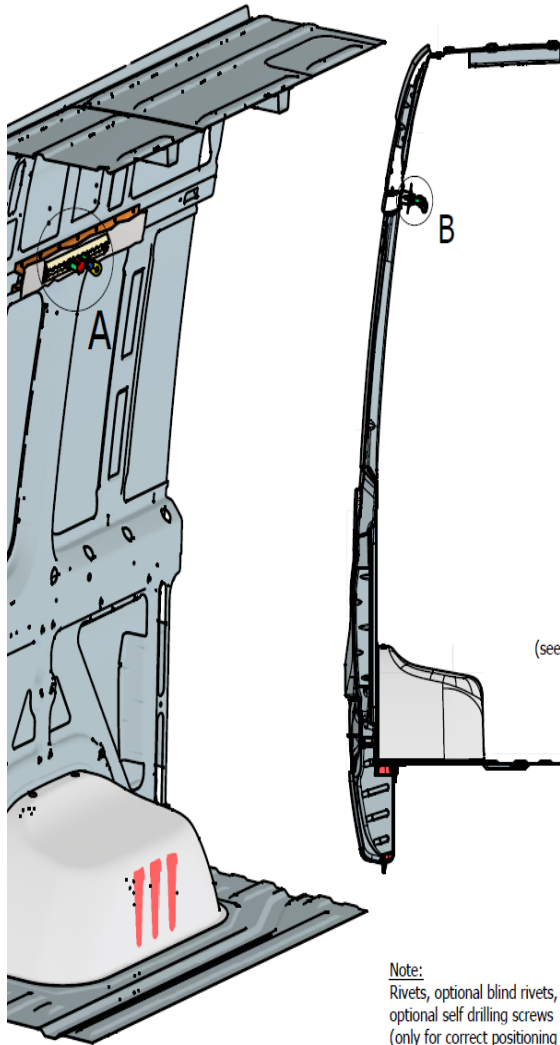


Distance to back edge of covering 21cm.





A (1:2,5)



B (1:1)

Note:  
 Rivets, optional blind rivets,  
 optional self drilling screws  
 (only for correct positioning until  
 adhesive is sufficiently hardened)

Principal drawing.  
 Body of Mercedes-Benz Sprinter shown.  
 For mounting of 3P-rail, see vehicle-specific drawing.

REVISION HISTORY

Rev	Date	Designer	Description
02	28-6-2023	NPTK	Headliner added, text designation changed for some elements
03	26-10-2023	NPTK	Larger screws Ø6.3, minimum distance added and other changes

		Creation date: 12-02-2023 Revision date: 26-10-2023 Draughtman: NPTK Designer: NPTK Scale: 1 : 12 Page no.: 1/1	Drawing no.: Wheelchair fixation -R03
	Autoproducts ApS Baggeskærvej 48 DK-7400 Herning Phone: +45 8818 1703		



**11250 – Mercedes Sprinter A2 shoulder belt kit (black)**

**11255 - Mercedes Sprinter A2 shoulder belt kit (silver)**

