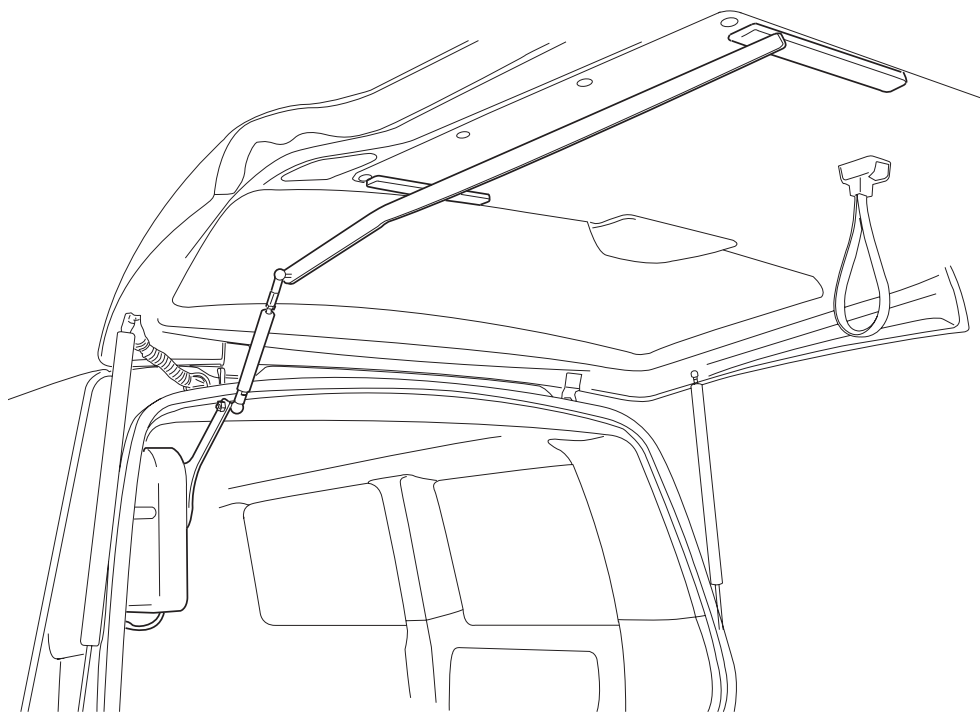


## MOUNTING INSTRUCTIONS

# handiHDO™

## HATCH DOOR OPENER



**FOR MOUNTING IN VEHICLES:**



VW  
T5 | T6



handicare

06042016

# ENGLISH



© 2016 Handicare

All rights reserved.

The information provided herein may not be reproduced and/or published in any form, by print, photoprint, microfilm or any other means whatsoever (electronically or mechanically) without the prior written authorization of **Handicare**.

The information provided is based on general data concerning the construction known at the time of the publication of this manual.

**Handicare** executes a policy of continuous improvement and reserves the right to changes and modifications.

The information provided is valid for the product in its standard version. Handicare can therefore not be held liable for any damage resulting from specifications of the product deviating from the standard configuration. Illustrations contained in the manual may deviate from the configuration of your product.

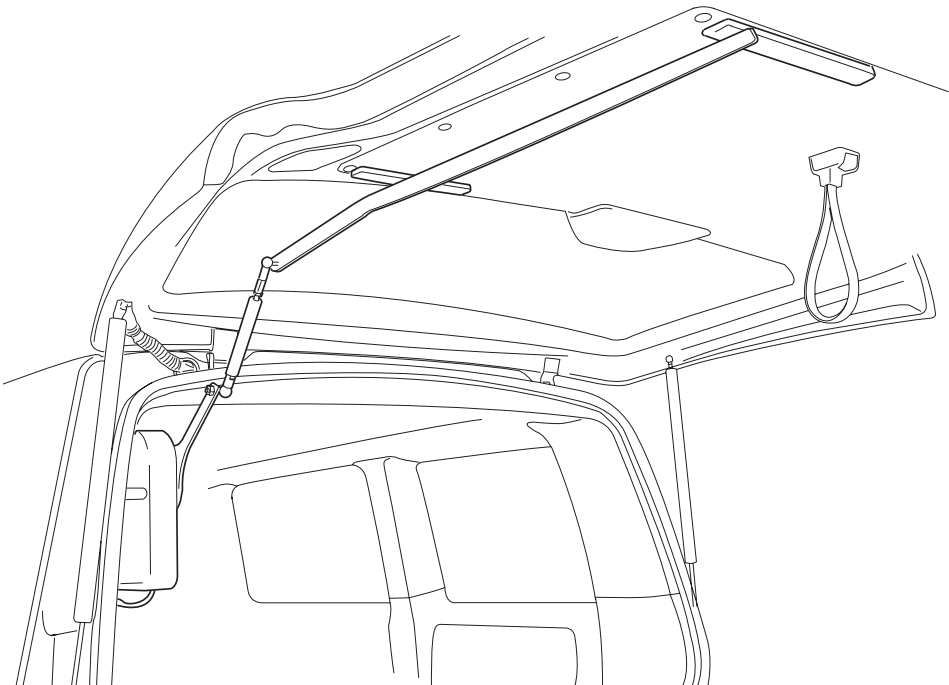
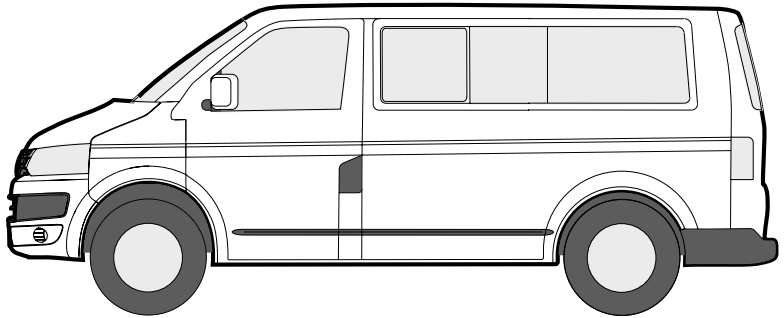
The information made available has been prepared with all possible diligence, but **Handicare** cannot be held liable for any errors contained in the information or the consequences thereof. **Handicare** accepts no liability for loss resulting from work executed by third parties. Names, trade names, trademarks etc. used by **Handicare** may not, as per the legislation concerning the protection of trade names, be considered as being available.

# handiHDO™

## HATCH DOOR OPENER



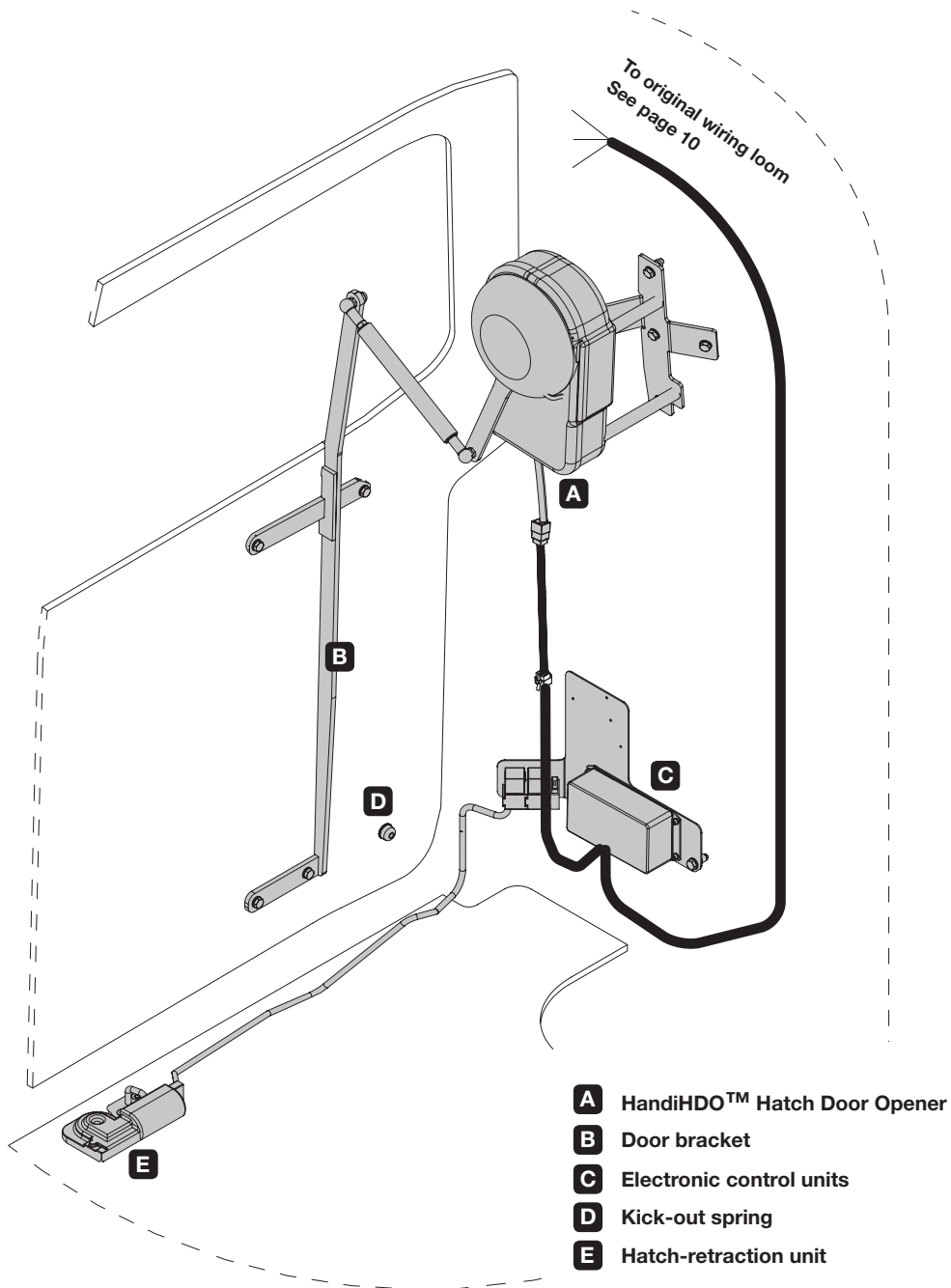
VW  
T5 | T6



## System overview

# handiHDO™

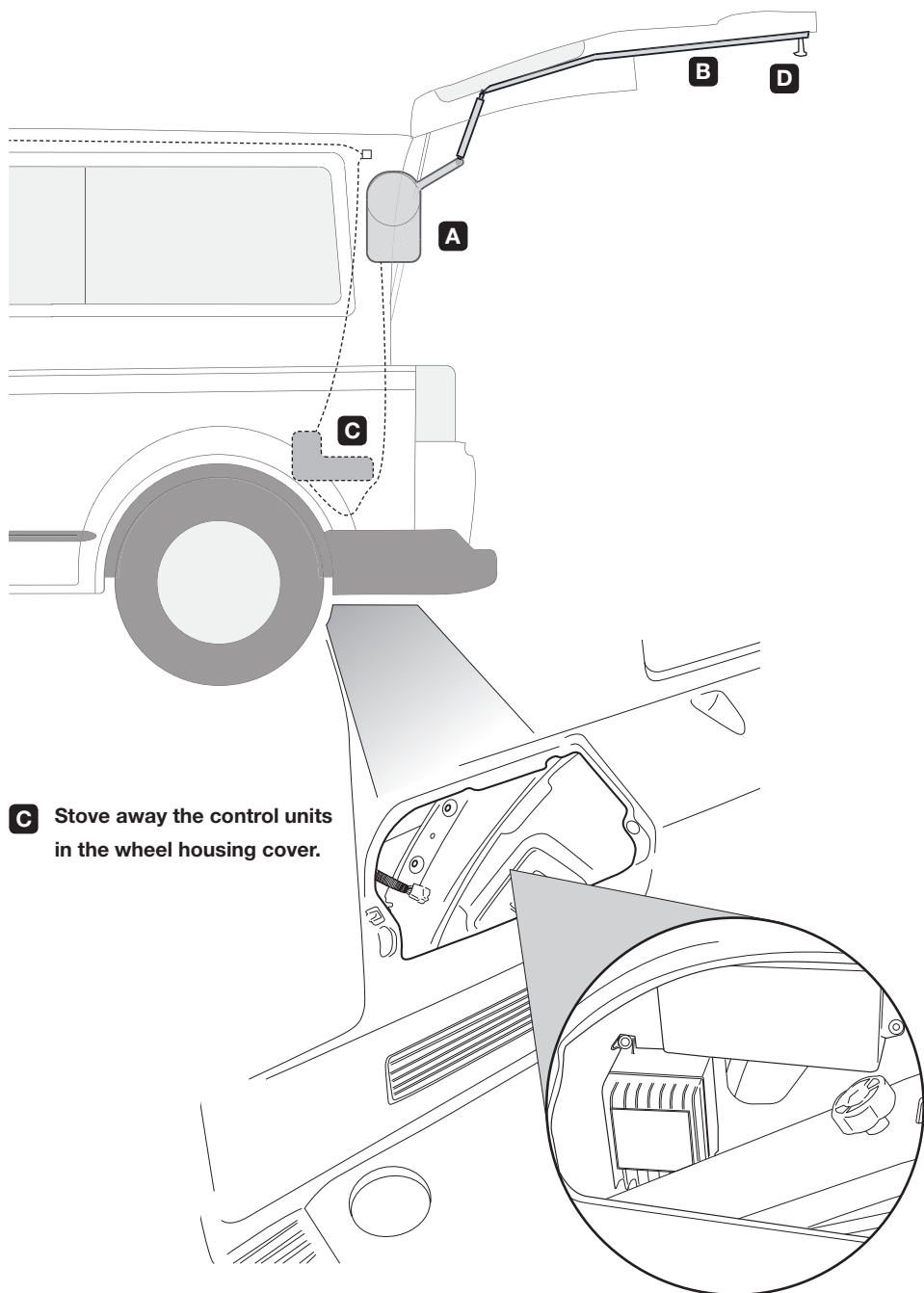
HATCH DOOR OPENER





## Positioning of door bracket

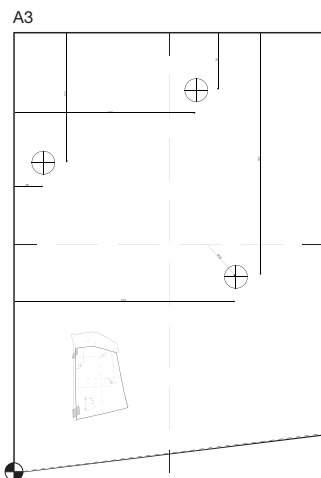
**handiHDO™**  
HATCH DOOR OPENER



# Package overview

**handiHDO™**  
HATCH DOOR OPENER

- 1** 1x Relay bracket
- 3** 1x Hatch-retraction unit and harness
- 4** 1x Wall bracket, HDO, VW
- 5** 1x Spring rod
- 6** 1x Control box/Relay board (HDO/RDO)
- 7** 1x HandiHDO™
- 8** 1x Mounting template (DOWNLOAD) →
- 11** 1x Controller (IN008-2-16) (*Sold separately*)
- 12** 2x M8 Rivet
- 13** 2x M8 Nut cap
- 14** 6x M4x10
- 15** 6x 4.3 Spacer
- 16** 4x Pop rivets
- 17** 2x M8x30 (Torx)
- 18** 3x M8x20
- 19** 10x M8x25
- 20** 13x 8.4 Spacer
- 21** 4x 8.4 Spacer
- 22** 4x M8 Nut
- 23** 2x M4 Nut
- 24** 2x 4.3 Spacer
- 25** 6x 5.3 Spacer
- 26** 2x M4x60
- 27** 2x Compression spring 7x45
- 28** 2x Heat Shrink Thermo 4,8
- 29** 1x Door bracket, VW T6
- 30** 1x Upper door bracket, VW T6
- 31** 1x Lower door bracket, VW T6
- 32** 1x Cable (1m)



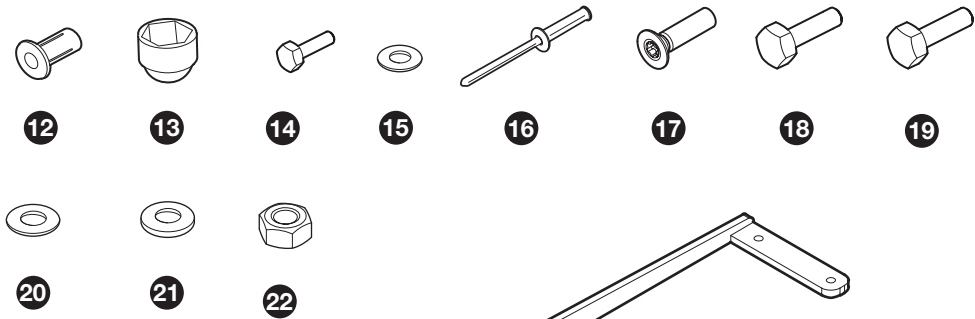
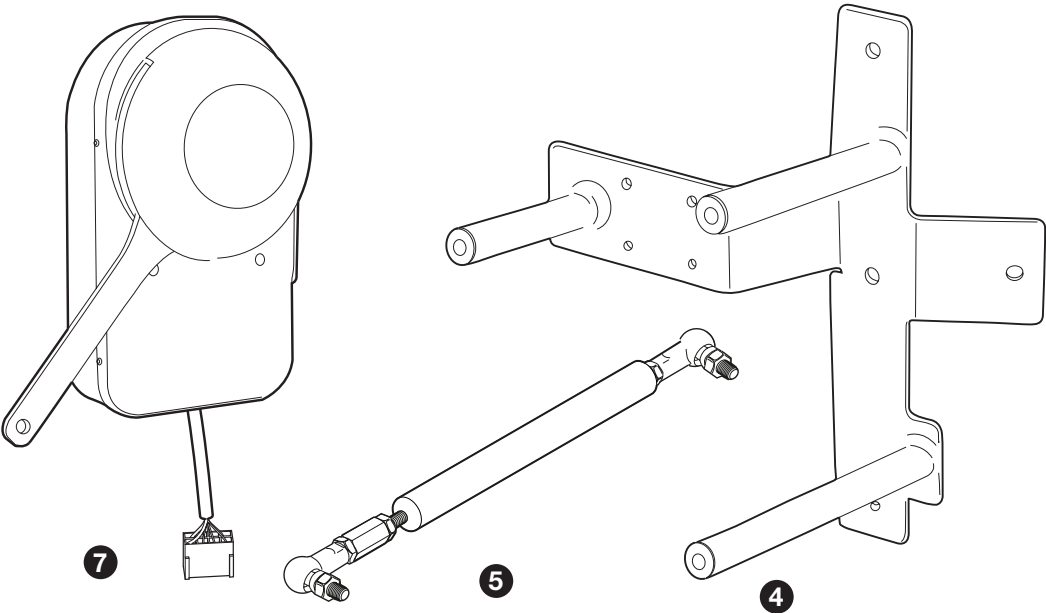
**DOWNLOAD  
TEMPLATE**

**PRINT 1:1 ON A3**

HandiHDO™ Hatch Door Opener  
VW T5 | T6

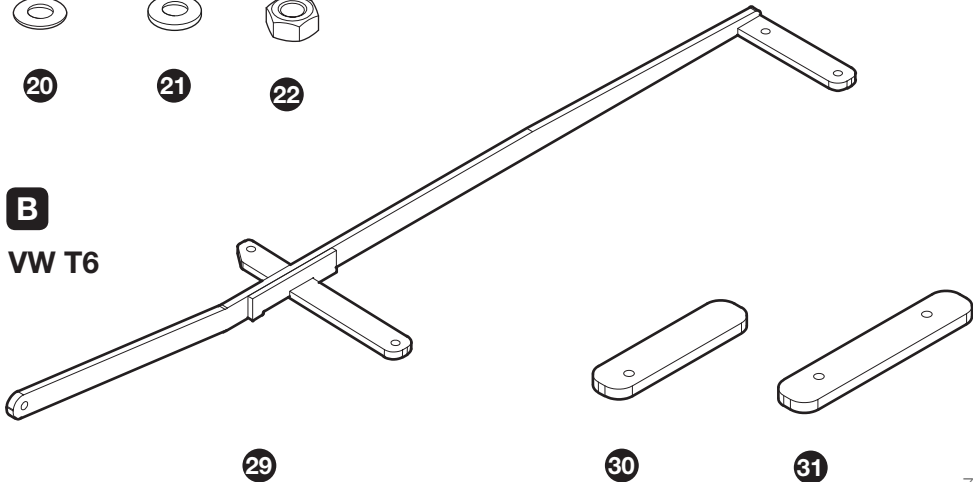
A

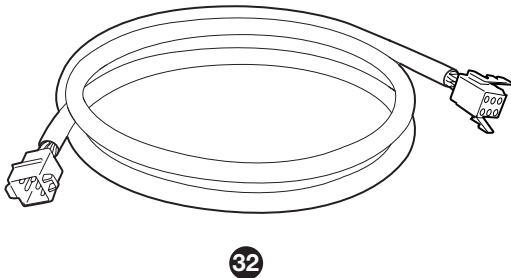
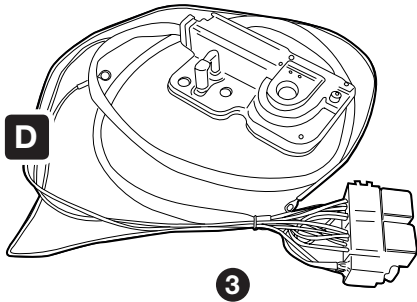
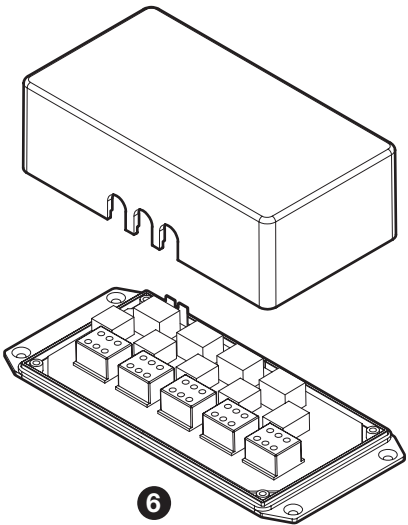
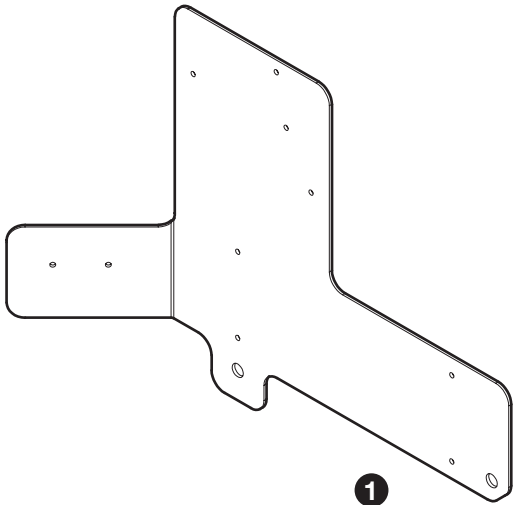
handiHDO™  
HATCH DOOR OPENER



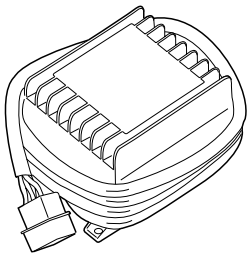
B

VW T6



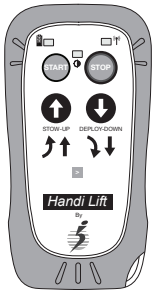


**Optional features (Sold separately)**



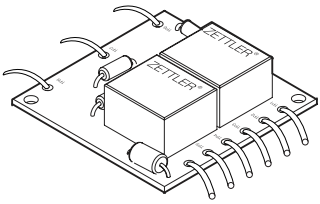
**Wireless reciever**

**33**



**Wireless transmitter**

**34**

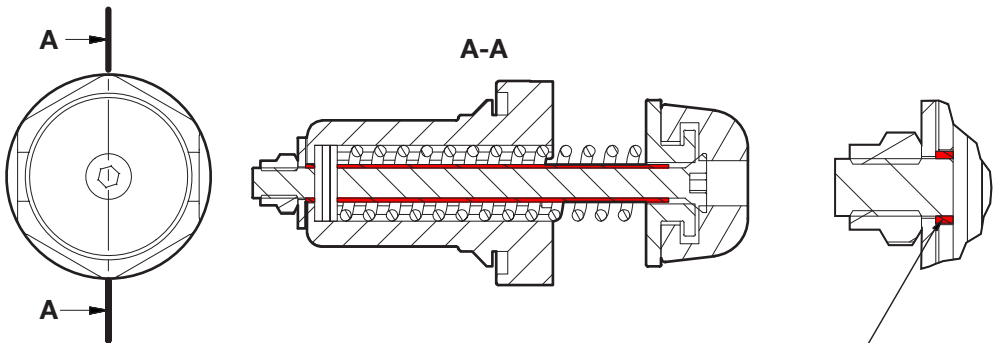
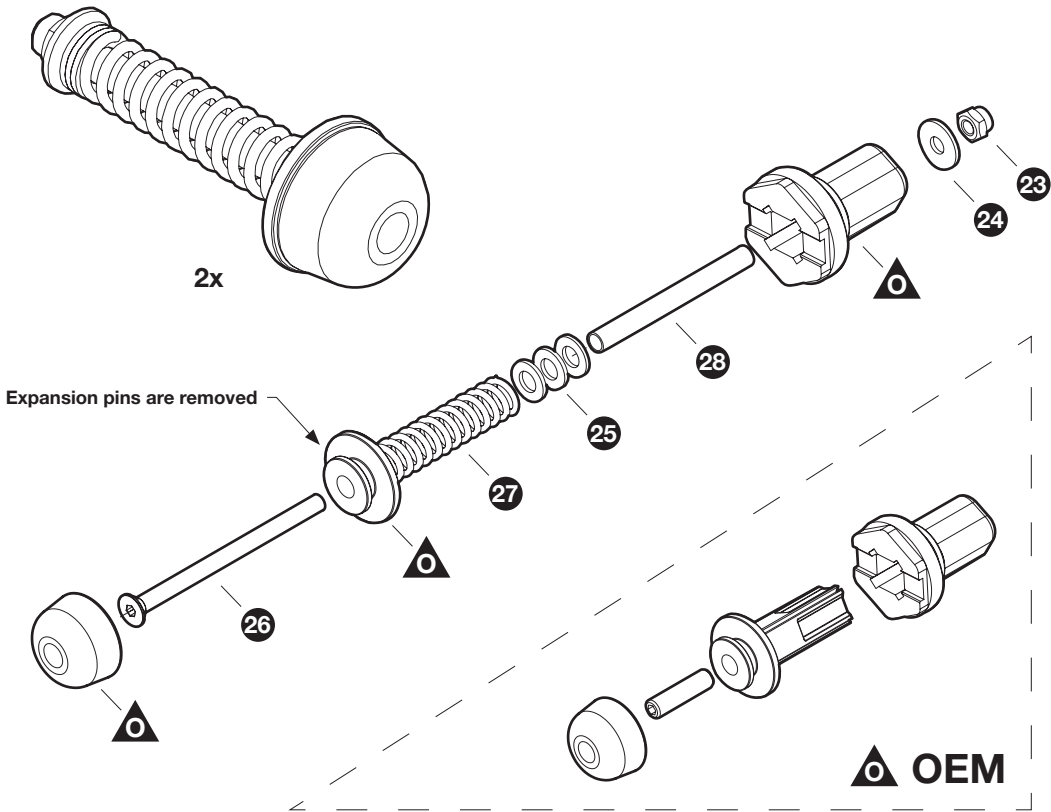


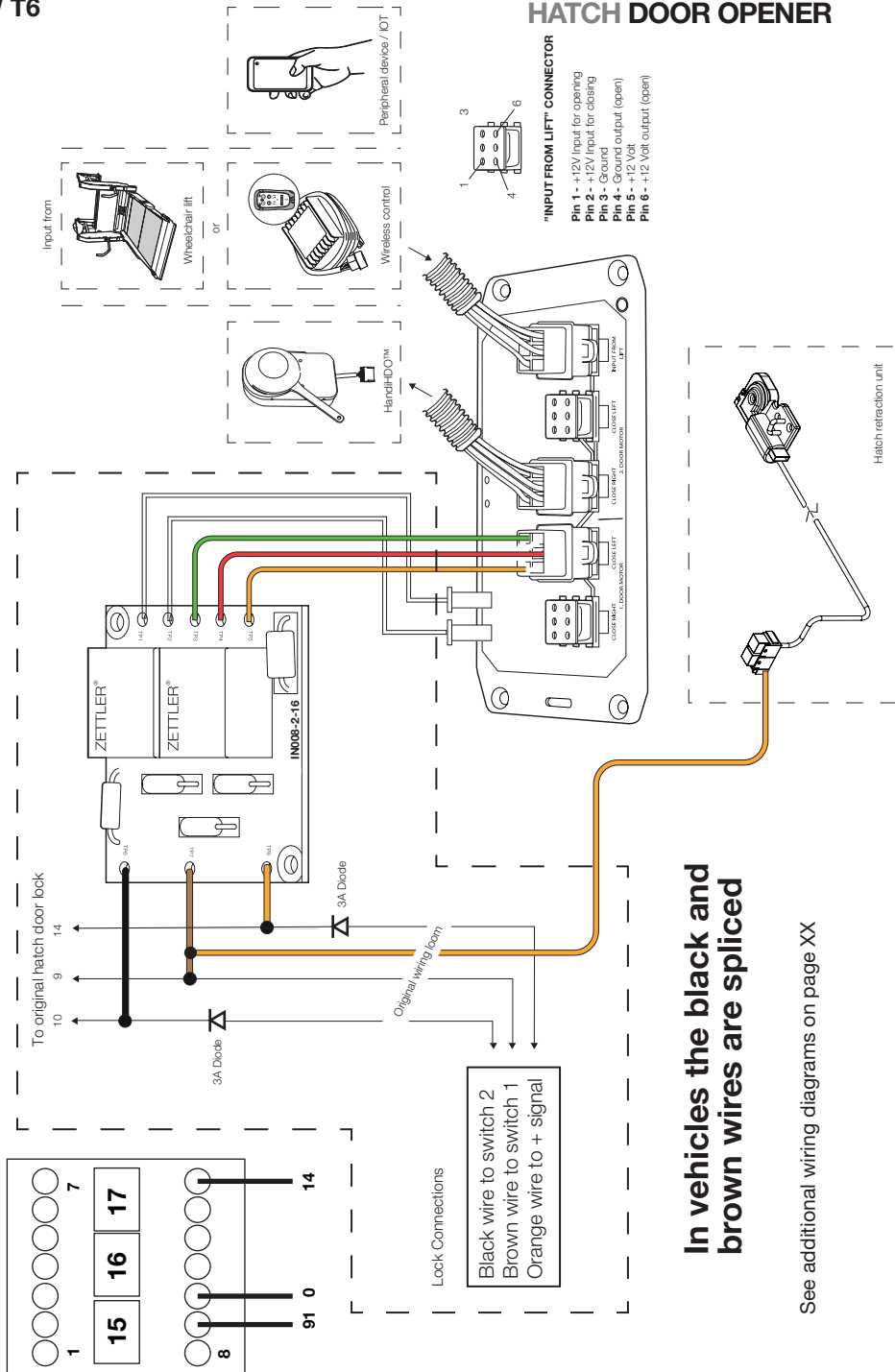
**1x Control (IN008-2-16)**

**35**

**Kick-out spring D**  
VW T6

**handiHDO™**  
HATCH DOOR OPENER



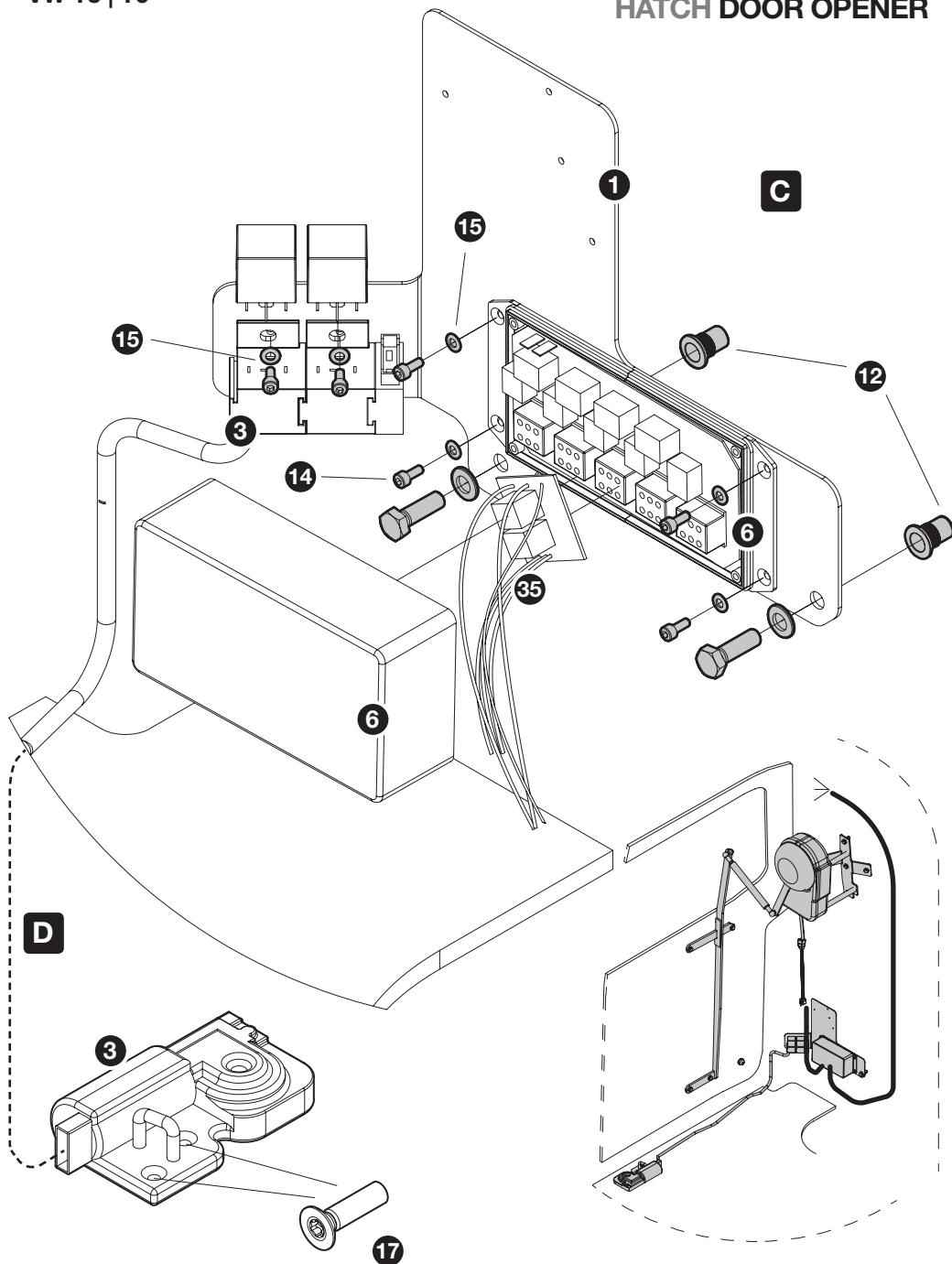


# Electronic control units **C D**

VW T5 | T6

# handiHDO™

HATCH DOOR OPENER

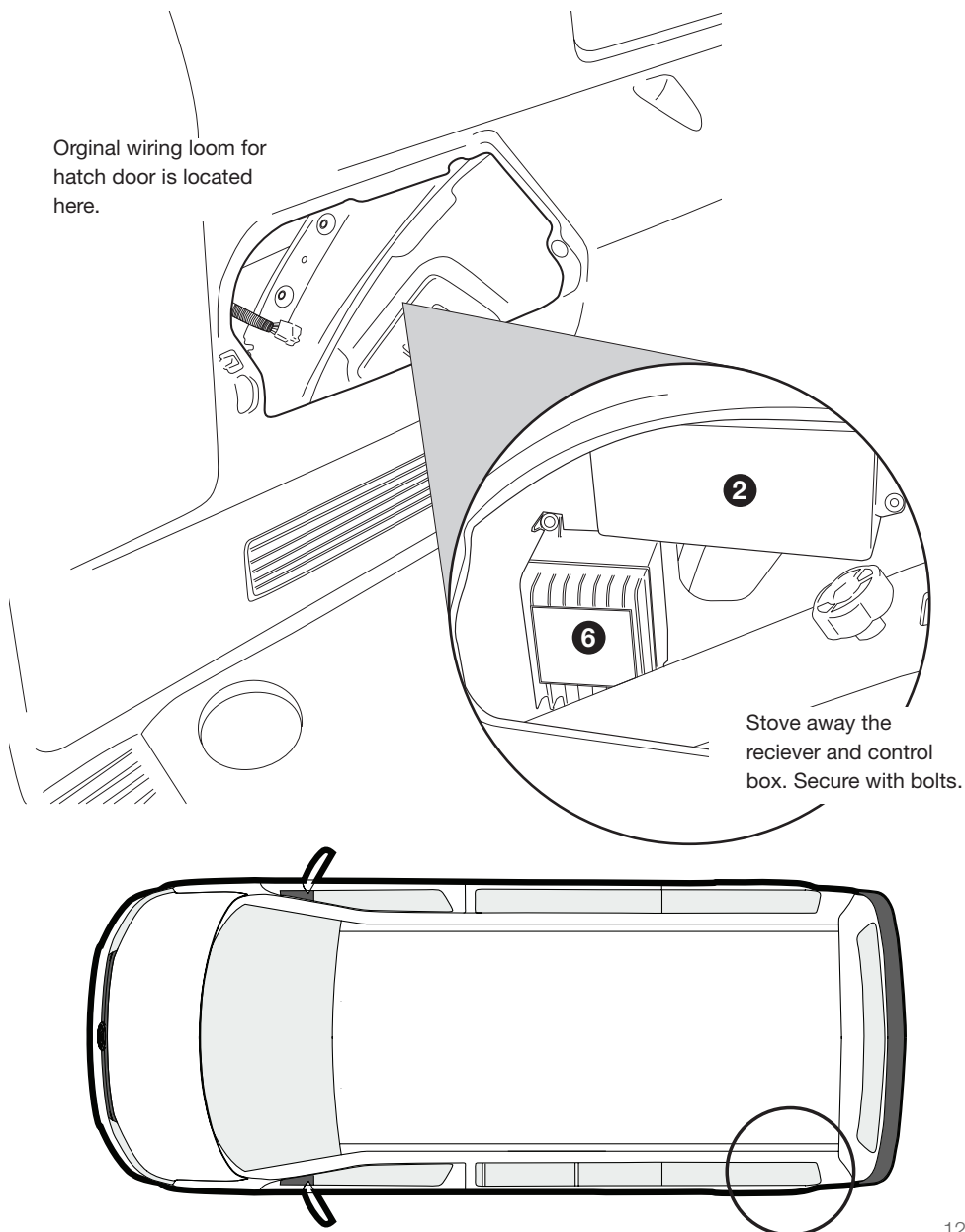


## Mounting of CPU and wireless reciever

# handiHDO™

## HATCH DOOR OPENER

The control box and the wireless reciever is stoved away inside the wheel arch covers.



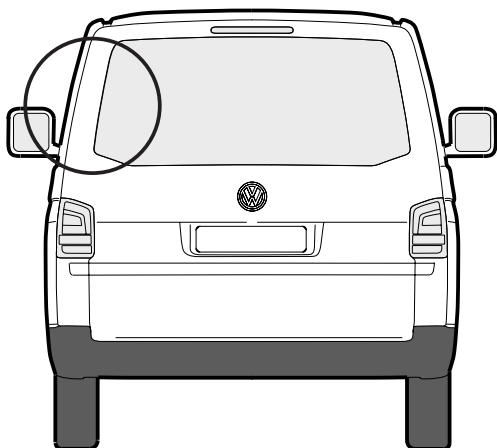


# 01 - Mounting template

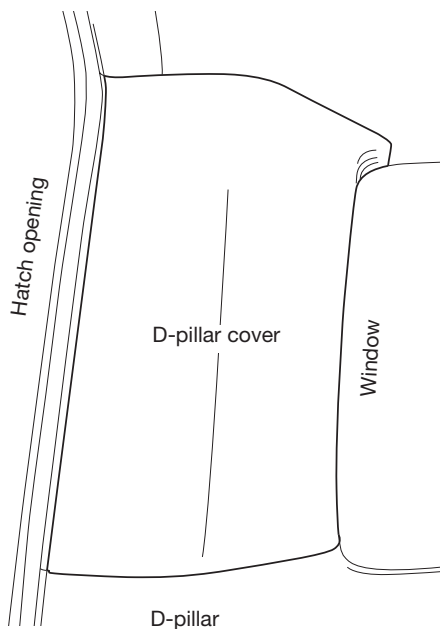
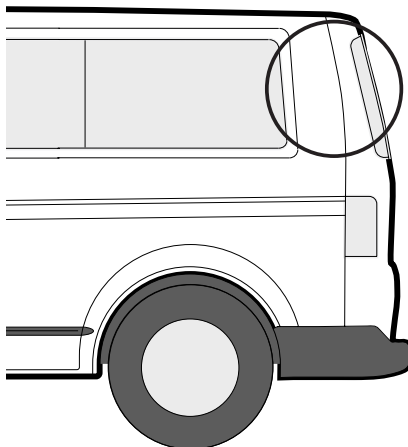
VW T5 | T6

**handiHDO™**  
HATCH DOOR OPENER

D-pillar



D-pillar



Inside view of D-pillar



D-pillar cover

# 01 - Mounting template

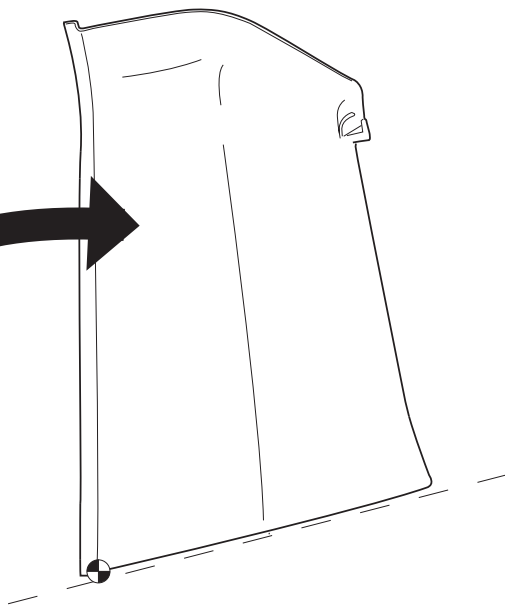
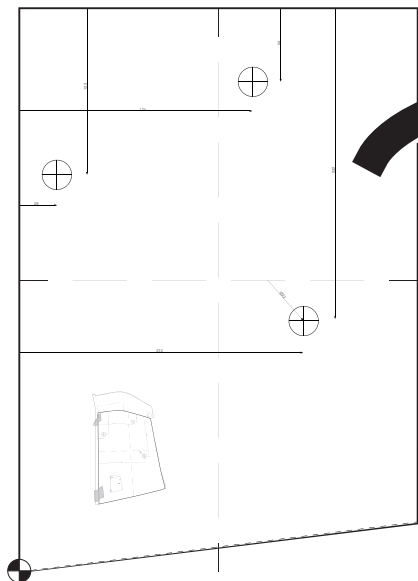
VW T5 | T6

# handiHDO™

HATCH DOOR OPENER

The attached paper template is placed on the D-pillar cover to help mark up the 3 holes for mounting of the HandiHDO™.

A3



**DOWNLOAD  
TEMPLATE**

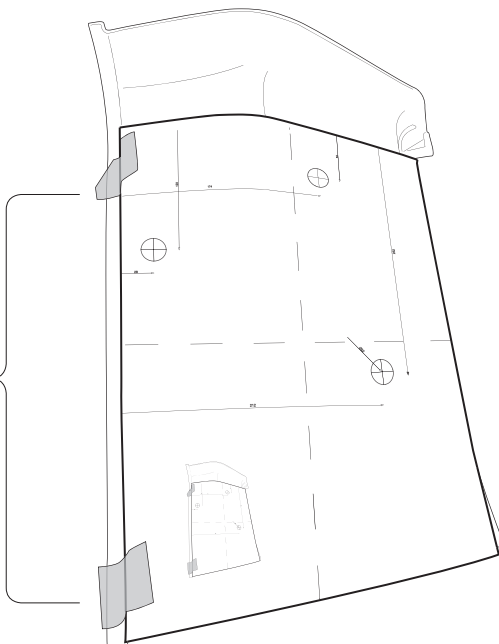
**PRINT 1:1 ON A3**



1. Cut the template at the cutting line, and place it so it flushes the lower edge of D-pillar cover.

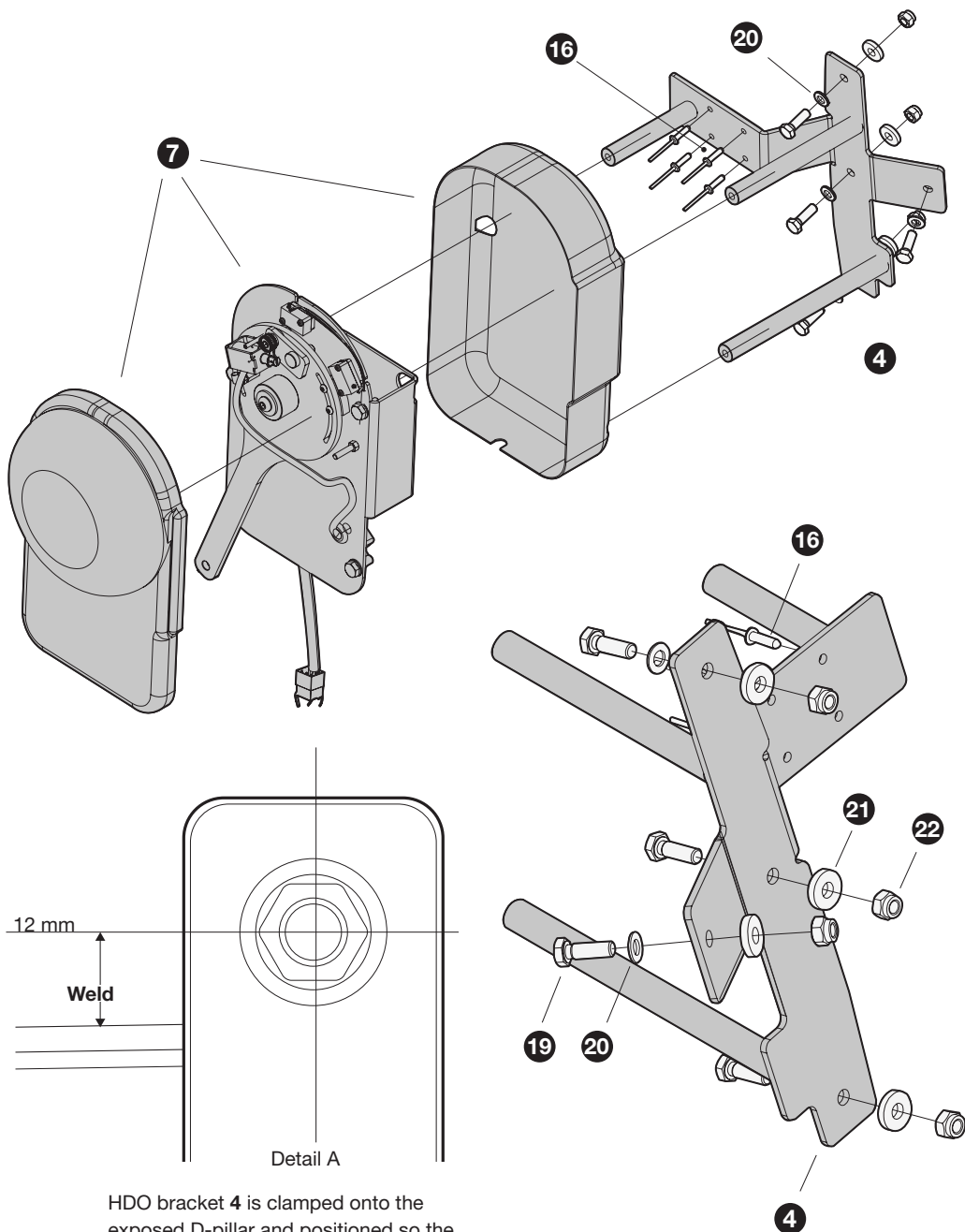
Use tape to secure the template while marking up the holes.

We recommend the use of a center punch to mark the holes, and afterwards remove the template to drill the holes (Ø22 mm).



# Positioning of bracket VW1

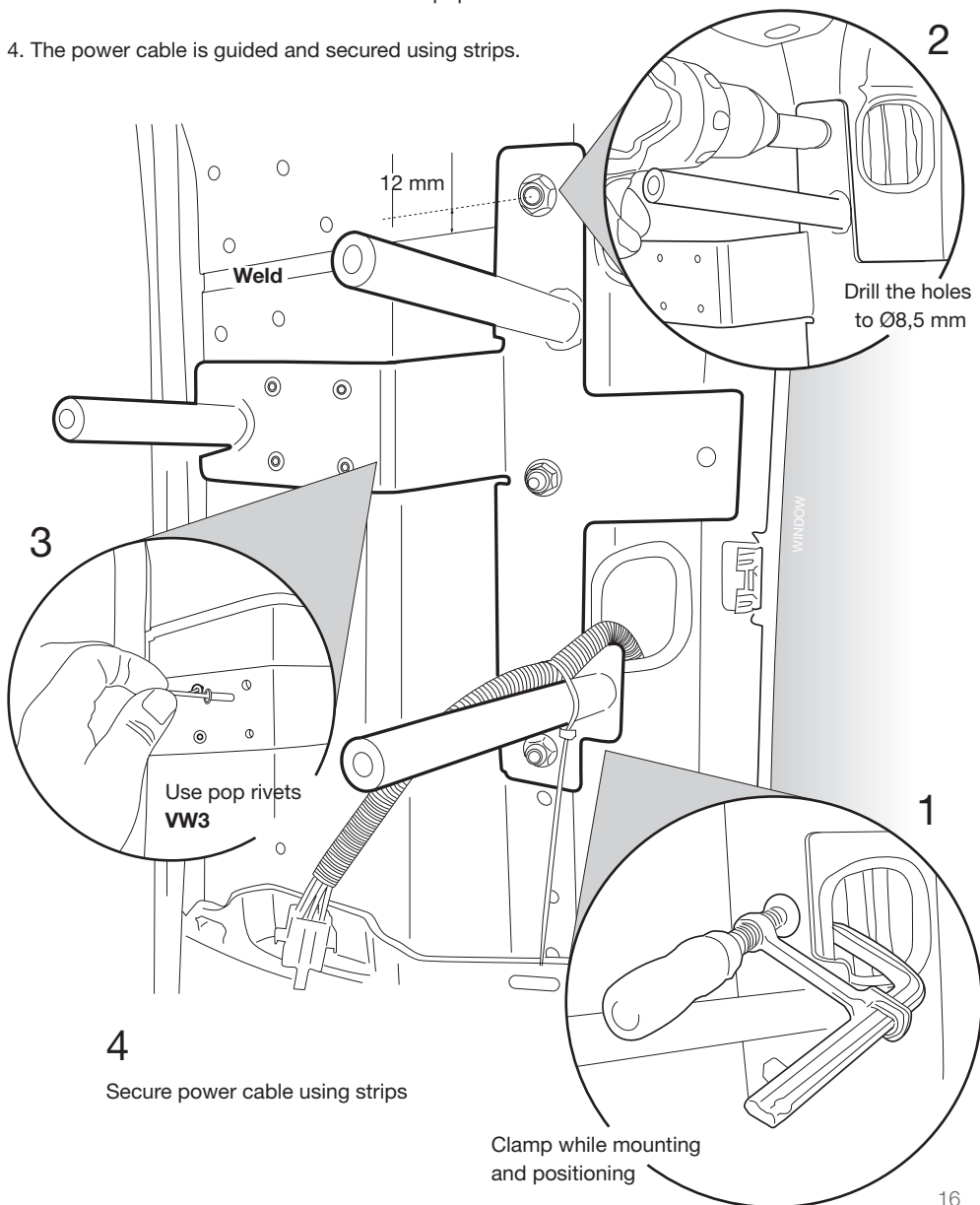
## handiHDO™ HATCH DOOR OPENER



# Mounting of HDO bracket

## handiHDO™ HATCH DOOR OPENER

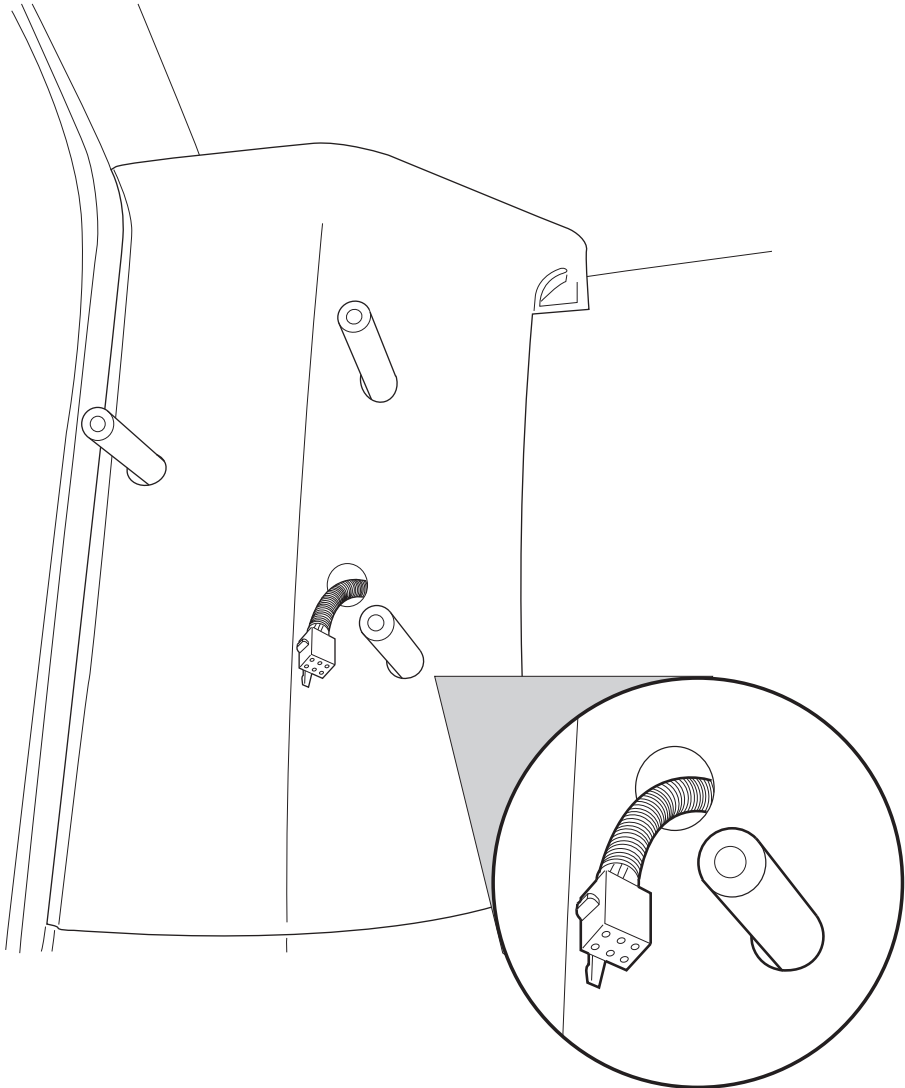
1. Bracket **4** is clamped onto the exposed D-pillar and positioned as illustrated below.
2. When bracket **4** is positioned, drill the 4 main holes to Ø8,5 mm, and mount **VW4**, **VW5** and **VW7**.
3. Drill the 4 holes to Ø5 mm and mount with pop rivets **16**.
4. The power cable is guided and secured using strips.



## Mounting of D-pillar cover

**handiHDO™**  
HATCH DOOR OPENER

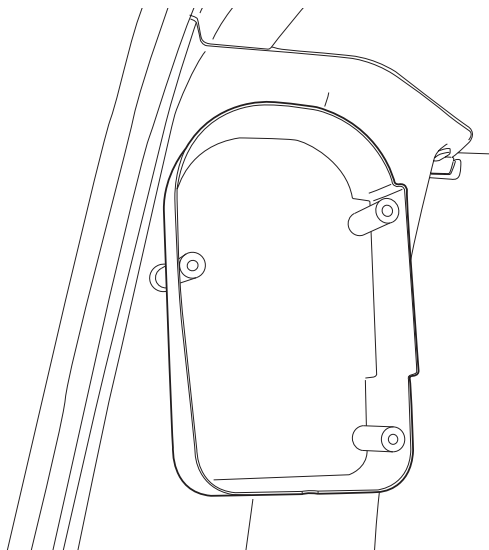
1. The D-pillar cover is remounted, exposing 3 arms of bracket 4.
2. Drill a Ø22 mm hole to guide through the power cable.



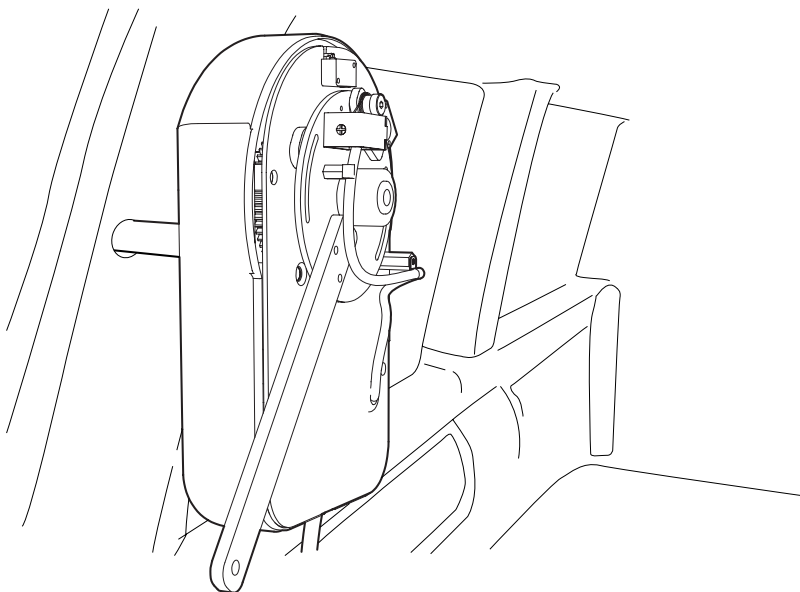
# Mounting of Handi HDO™

**handiHDO™**  
HATCH DOOR OPENER

1. The Handi HDO™ back cover is mounted onto the three exposed arms of bracket 4.



2. The Handi HDO™ motor unit is placed inside the back cover, without mounting the front cover. The hatch door bracket **29** is now ready to mounted.

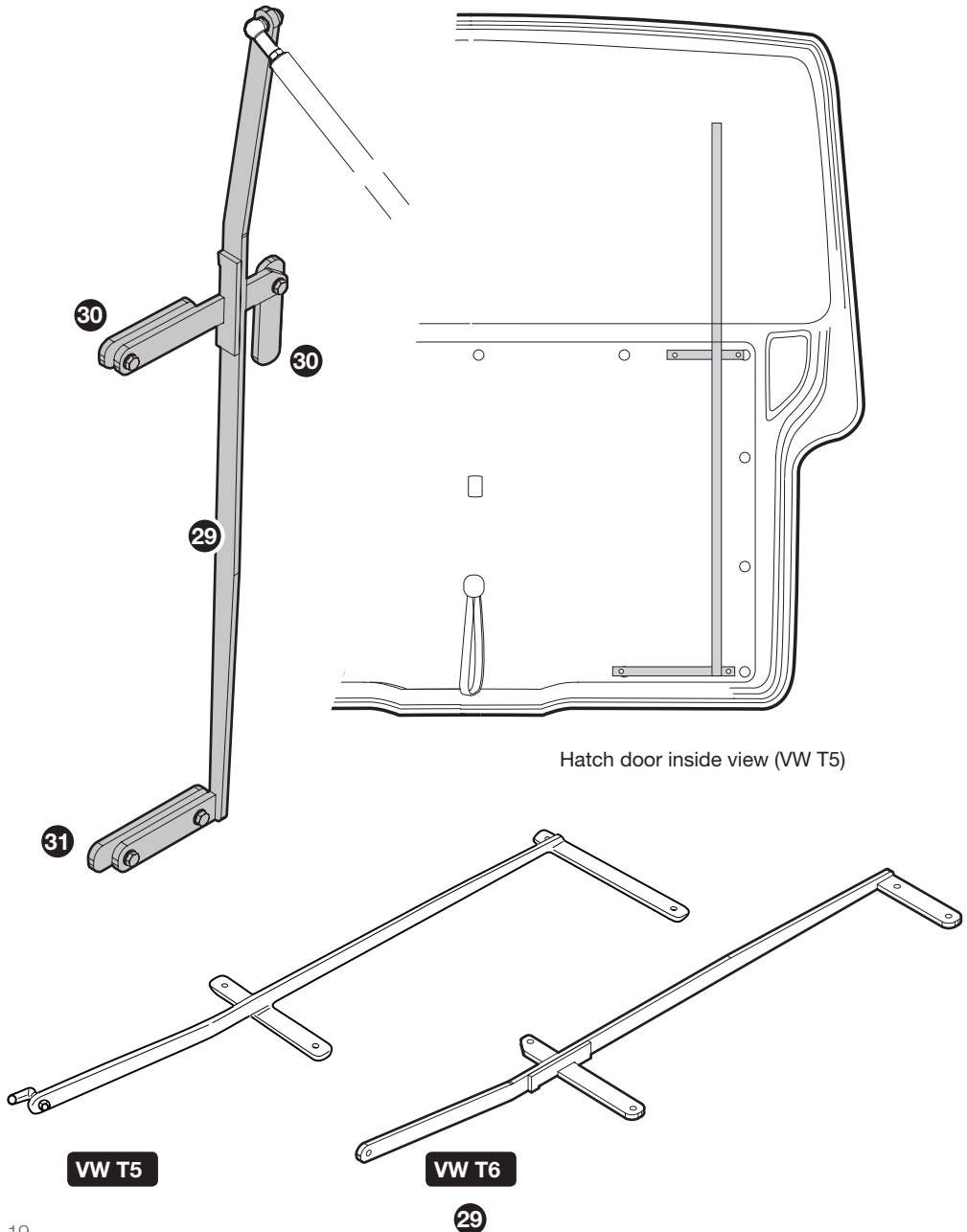


## Positioning of door bracket

# handiHDO™

### HATCH DOOR OPENER

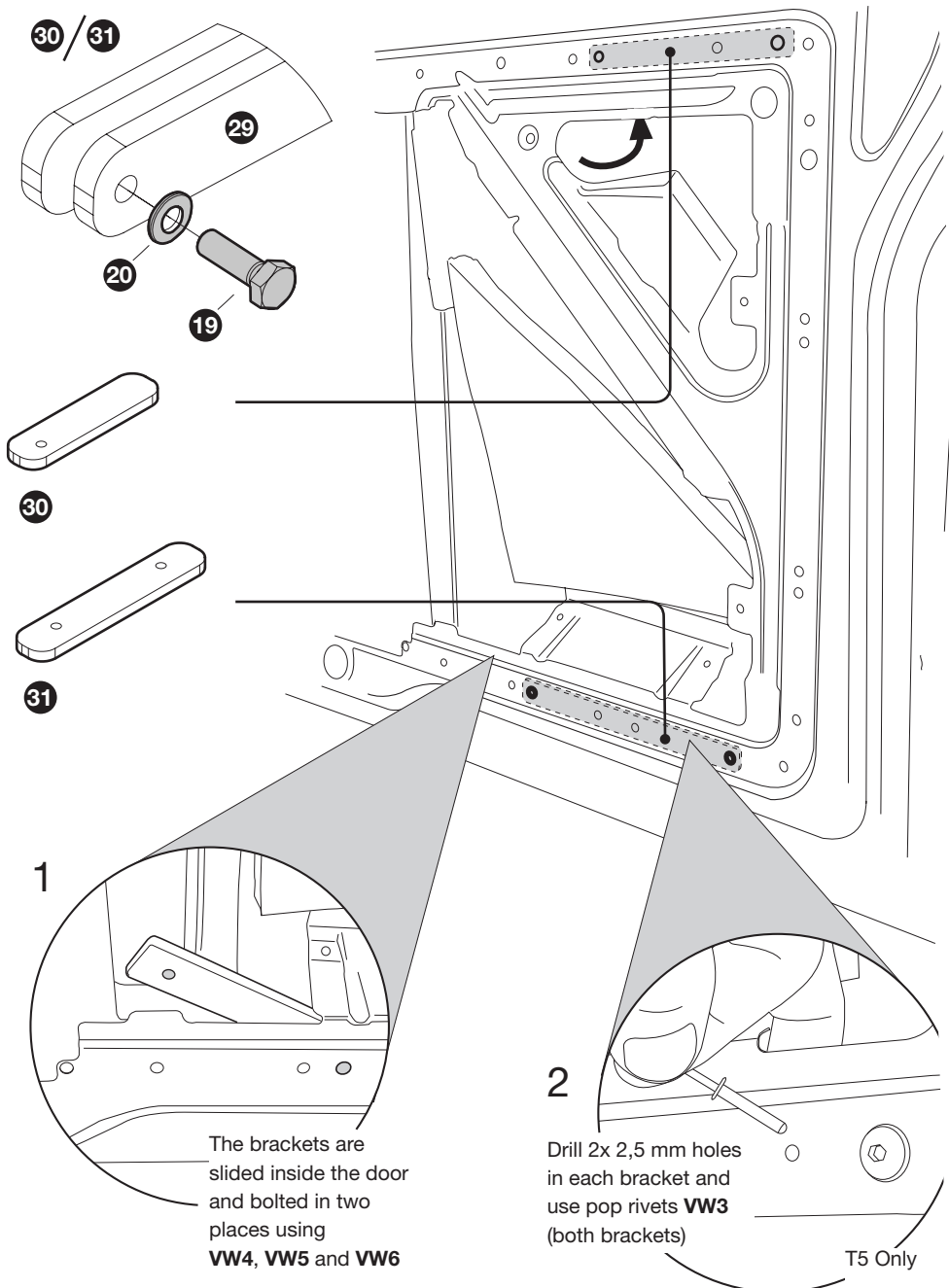
Bracket **VW2** is placed on the right side of the hatch door, looking from inside.



VW9 & VW10

# handiHDO™

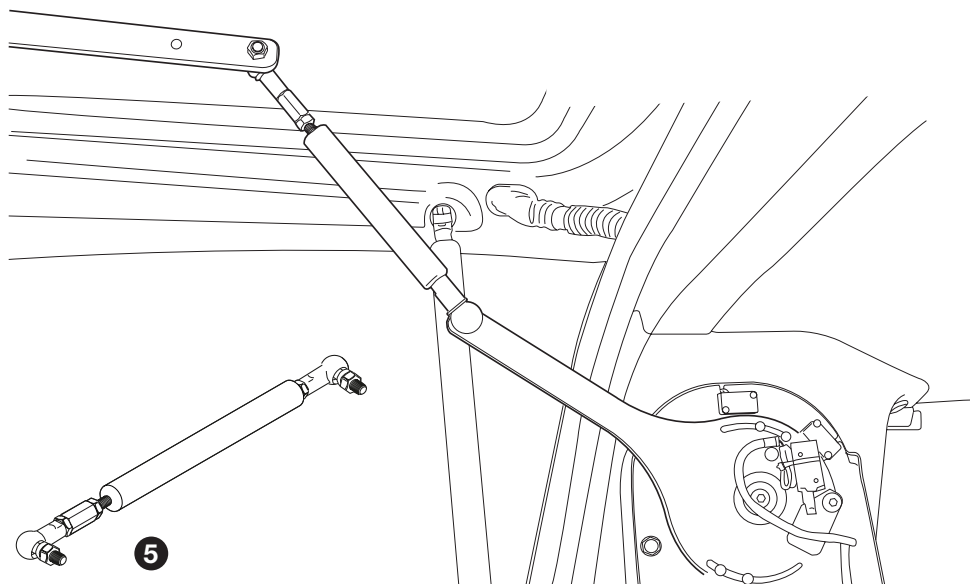
HATCH DOOR OPENER



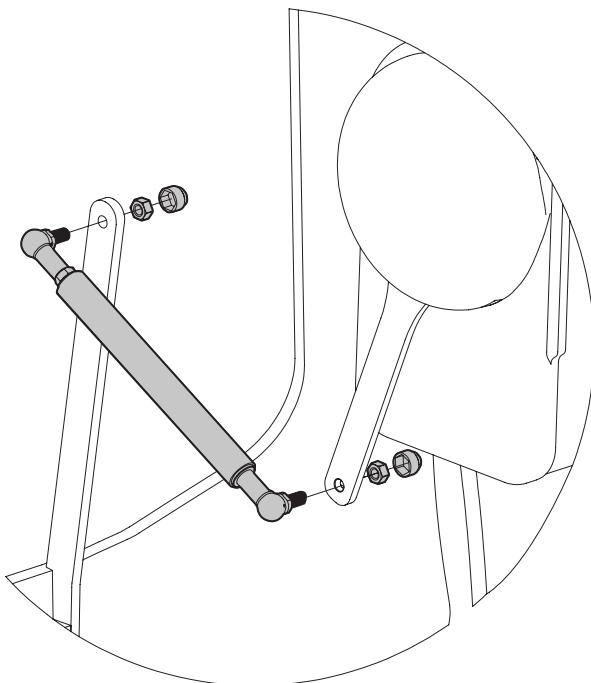


## Mounting of bracket VW2

**handiHDO™**  
HATCH DOOR OPENER

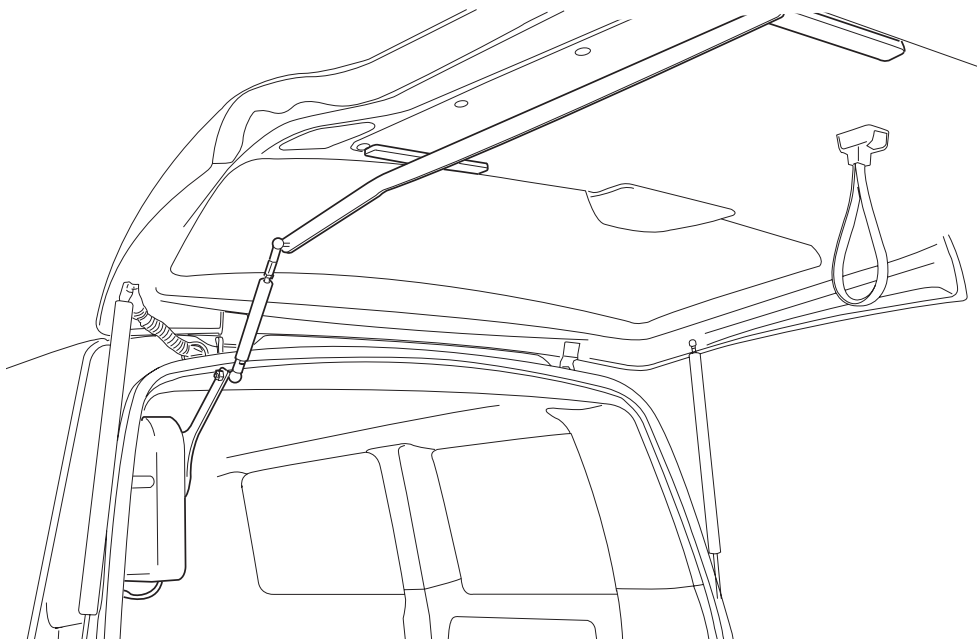


The rear door cover is remounted and **29** and the HandiHDO™ is connected using spring rod **5**.



## Mounting of bracket VW2

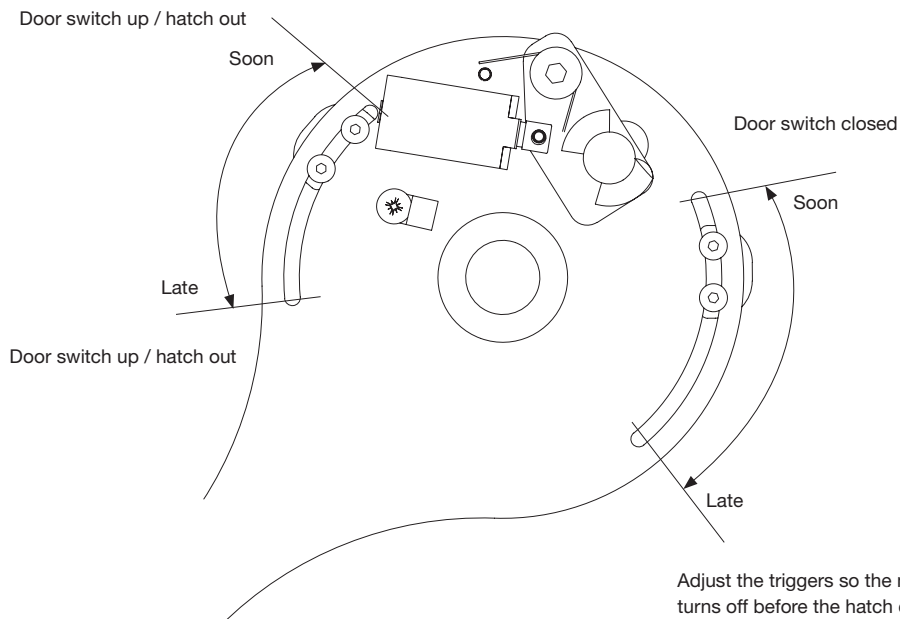
**handiHDO™**  
HATCH DOOR OPENER



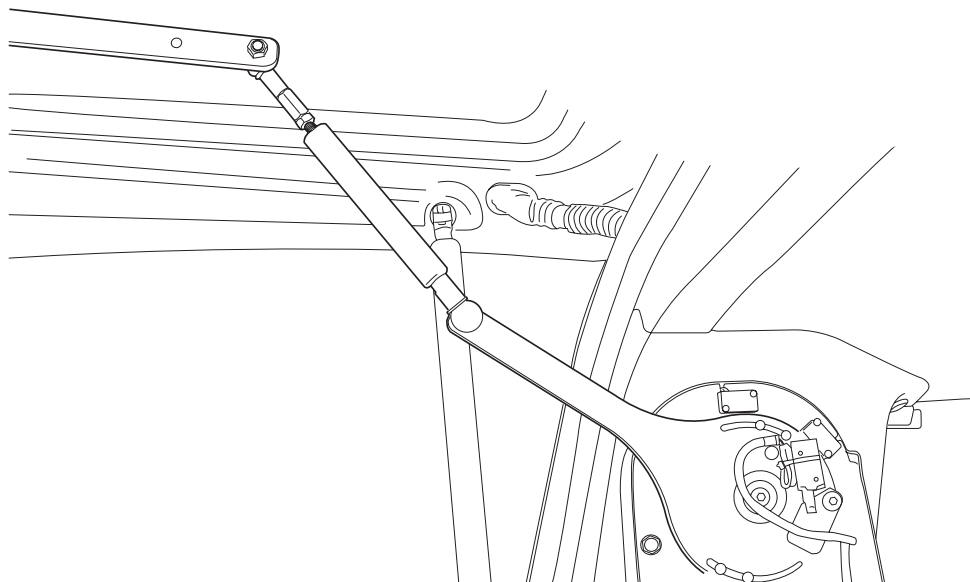
Finished setup with door opener and bracket.

# Adjustment

## handiHDO™ HATCH DOOR OPENER



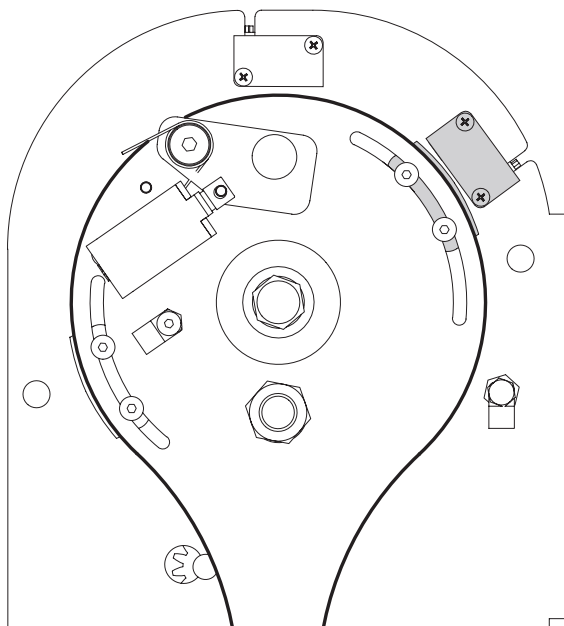
Adjust the triggers so the motor turns off before the hatch closes completely. This releases the motor from manual operations.



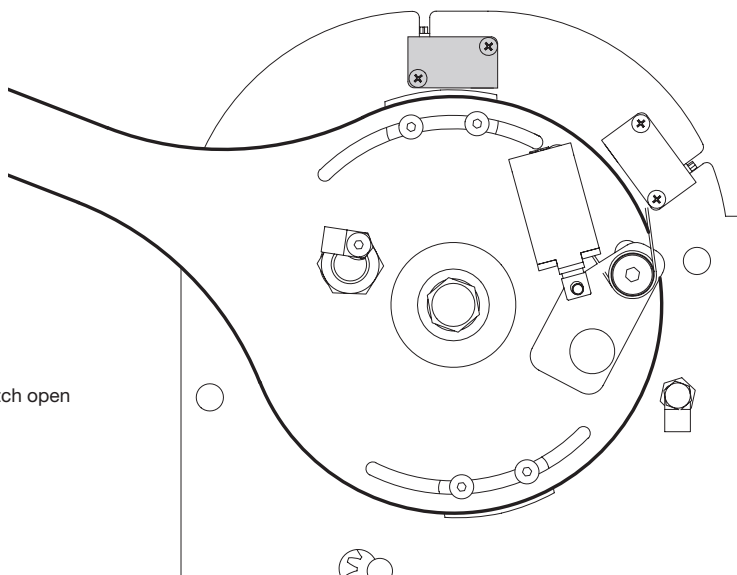
# Adjustment

## handiHDO™ HATCH DOOR OPENER

Hatch closed



Hatch open



# Wiring Diagram

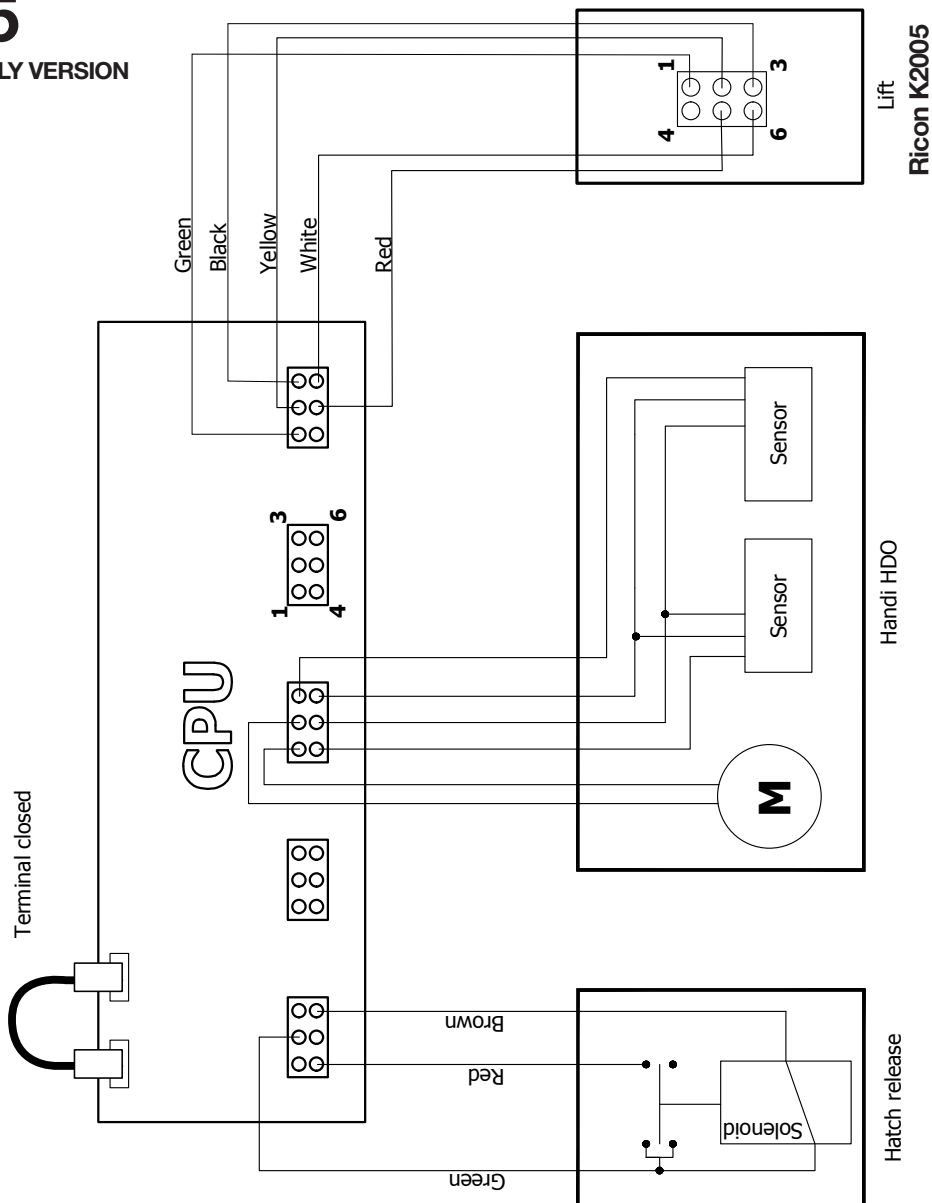
Manual Hatch Release

**handiHDO™**

HATCH DOOR OPENER

## T5

EARLY VERSION



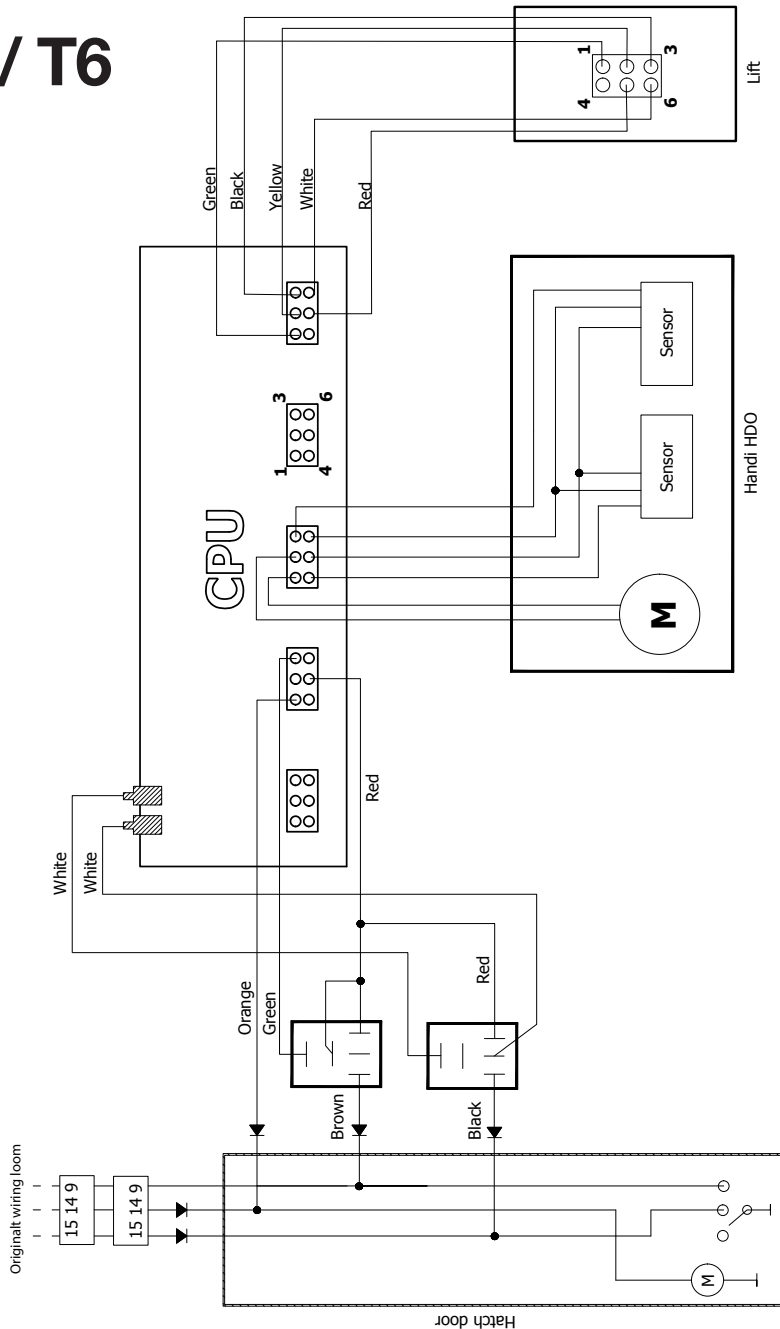
# Wiring Diagram

Automatic Hatch Release (with lift)

# handiHDO™

HATCH DOOR OPENER

## T5 / T6

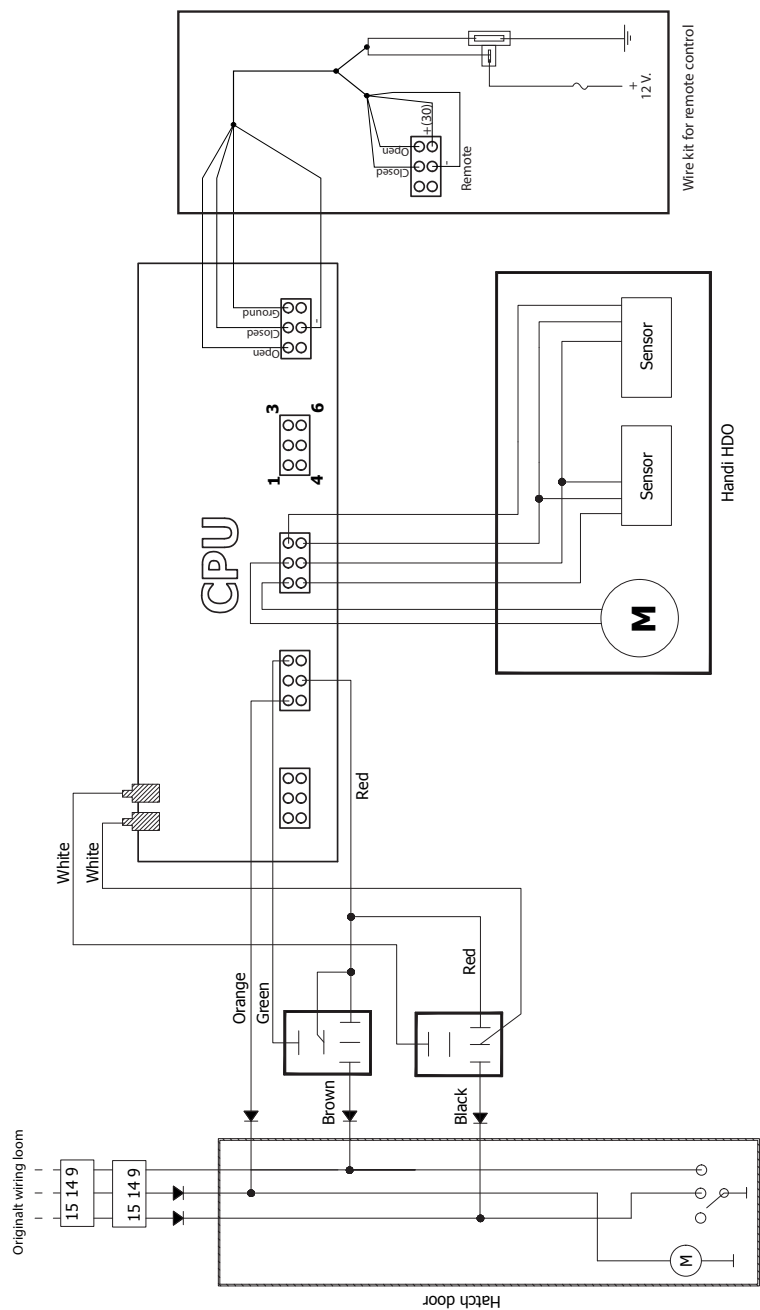


# Wiring Diagram

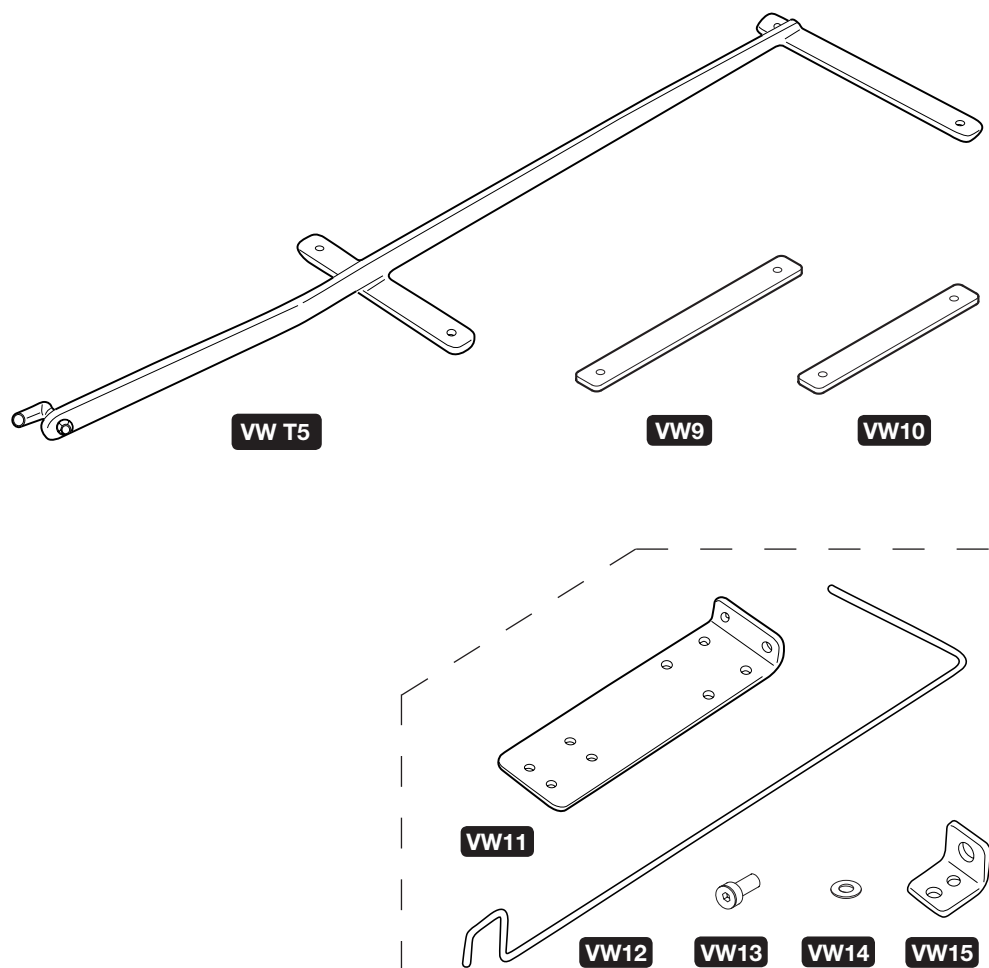
Automatic Hatch Release (without lift)

**handiHDO™**

HATCH DOOR OPENER



# Non support



Non-solenoid release (No Support)



# BRACKET KIT IN008-2-18

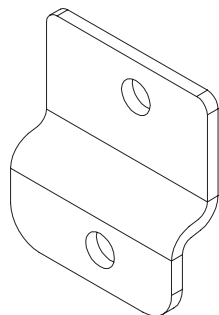
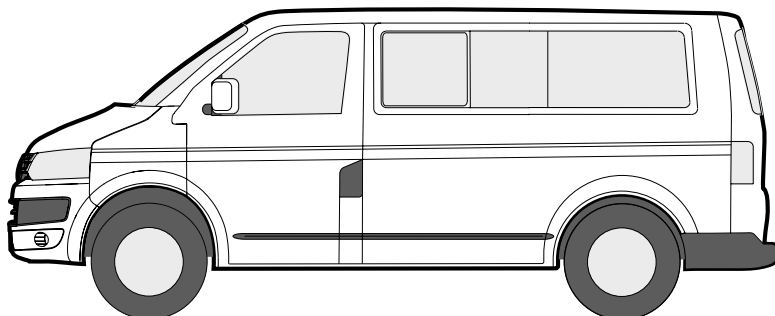
CLOSING BRACKET VW T5

**handiHDO™**

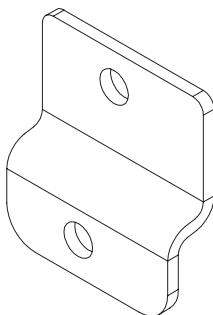
HATCH DOOR OPENER



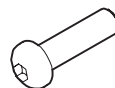
VW  
T5



1

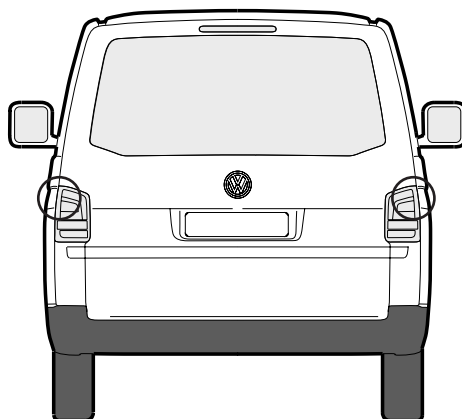


2



3

- 1 1x Bracket (Left)
- 2 1x Bracket (Right)
- 3 2x M6x25 mm Bolt



Left

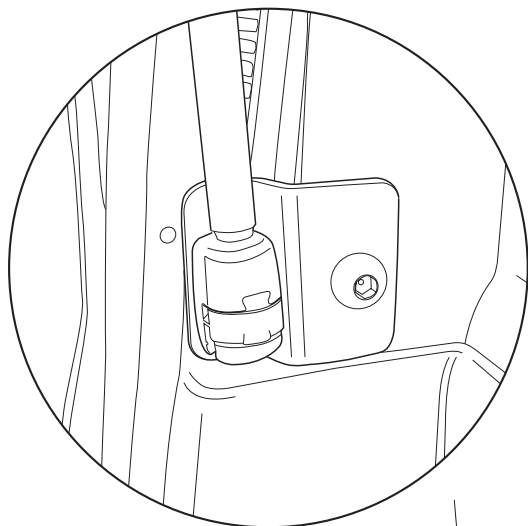
Right

# Mounting of brackets

## handiHDO™ HATCH DOOR OPENER

The hatch door on VW T5 has shown difficult to close, when all the doors and windows are closed. This is due to the gas dampers operating in a nearly vertical position.

By removing the original brackets and attaching these modified brackets, the lower gas damper is moved 30 mm, which improves closing effect noticeable.

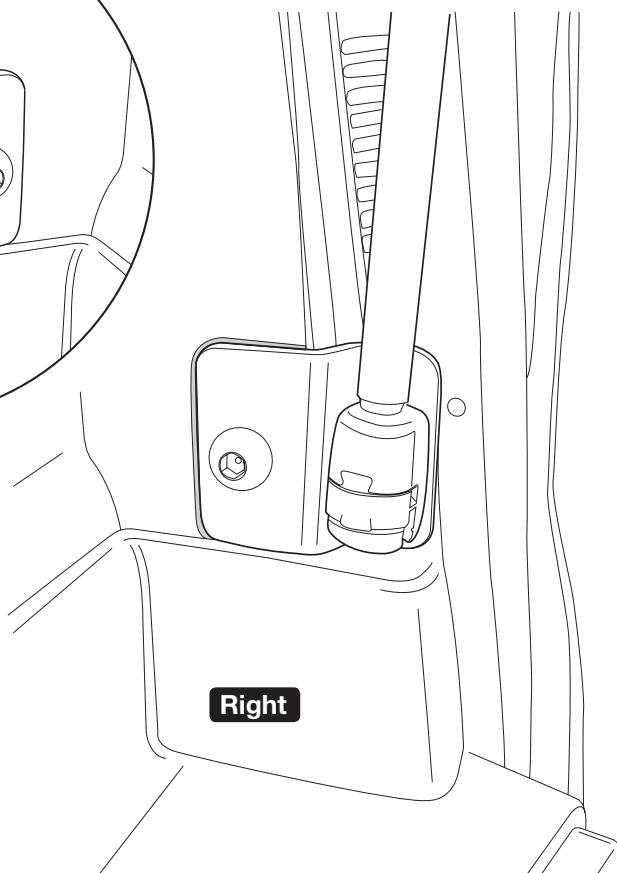


**Left**

### NOTE!

The two brackets differ!  
Be aware of correction orientation!

Use e.g. SIKAFLEX® (marked grey)  
between vehicle body and brackets.





Baggeskærvej 48  
DK-7400 Herning  
T +45 97 12 96 22  
[autoproducs@handicare.dk](mailto:autoproducs@handicare.dk)  
[handicare.dk](http://handicare.dk)