

Assembly instructions.

MB Sprinter 316. 2020 -

Wheelchair shoulder belt rail above the window.



Step 1.

The roof fabric/covering is removed up to the driver's seat.

Step 2.

Left bracket/rail JK145 is applied with Lim Bostik ISR 70-05AP, or equivalent.

Application area can be seen in the picture.

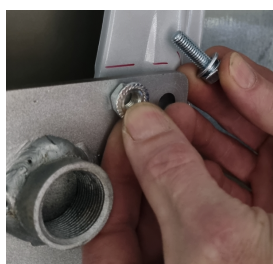
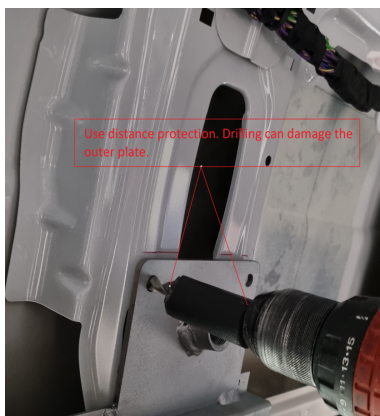


Step 3.

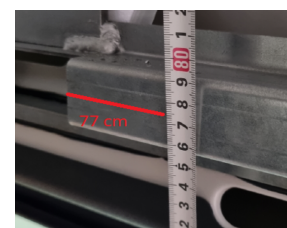
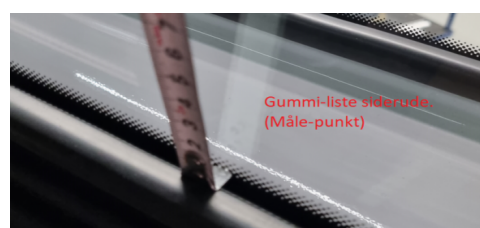
Bracket/rail JK145 is mounted as shown in pictures.

6pcs Ø8 holes are drilled in the vertical reinforcements, and the rail is fixed with 6pcs M8 bolts.

Self-tapping screws (supplied) are mounted in the 14pcs Ø5 mm holes.



Measure point - height to rail. Position from side window



Step 4.

The right bracket/rail JK140 is mounted in the same way as on the left side. Height from window strip 77 cm to middle rail.



Step 5.

Roof fabric/covering is installed.



Step 6.

Rail is mounted outside roof fabric/covering . Use the included self-tapping screws.



Distance to back edge of covering 21cm.



11250 – Mercedes Sprinter A2 shoulder belt kit (black)

11255 - Mercedes Sprinter A2 shoulder belt kit (silver)

